

# Gigaset

## DX800 A all in one

### Congratulations

By purchasing a Gigaset, you have chosen a brand that is fully committed to sustainability. This product's packaging is eco-friendly!

To learn more, visit [www.gigaset.com](http://www.gigaset.com).



GIGASET. INSPIRING CONVERSATION.  
**MADE IN GERMANY**



# Web configurator – Setting the phone using a PC

---

The Web configurator is the Web interface for your phone. It allows you to select the settings for your Gigaset DX800A all in one via your PC's Web browser. You can use your phone's Web configurator to do the following:

- ▶ Configure access from your phone to the local network (IP address, gateway to the Internet).
- ▶ Configure the phone number/telephone connections of your phone. Assign the connections as send and receive connections to your base and all connected handsets.
- ▶ Load new firmware onto your phone if necessary.
- ▶ Use Internet services: Enable access to an online directory and display text information on the base (info services).
- ▶ Synchronise the date/time on the telephone with a time server on the Internet.
- ▶ Copy the contacts from the Outlook directory on your PC to the local directory on your base.  
Or:  
Back up your phone directories on a PC. Copy the entries to your Outlook directory.
- ▶ Obtain information about the status of your phone (firmware version, MAC address, phone numbers, connected handsets etc.).
- ▶ Back up your phone configuration on the PC and reload the back-up to the base when required.

# Contents

---

<b>Web configurator – Setting the phone using a PC</b> .....	<b>1</b>
<b>Web configurator menu</b> .....	<b>5</b>
<b>Connecting the PC with the telephone's Web configurator</b> .....	<b>6</b>
Establishing a connection via the base's IP address .....	6
Establishing a connection via Gigaset config .....	7
<b>Logging in to/off the Web configurator</b> .....	<b>8</b>
Logging in, setting the interface language .....	8
Logging off .....	9
<b>Understanding the structure of the Web configurator pages</b> .....	<b>10</b>
Menu bar .....	10
Using the navigation area .....	11
Using the working area .....	11
Using the buttons .....	12
Opening Web pages .....	13
<b>IP Configuration – Connecting to the LAN</b> .....	<b>14</b>
Assigning the IP address .....	14
Allowing access from other networks .....	15
Entering an HTTP proxy server (only when connected to an internal company network) .....	16
Accessing to a tagged VLAN .....	16
<b>Telephony – Connections:</b>	
<b>Configuring phone connections</b> .....	<b>18</b>
Setting the fixed line network connection .....	21
Configuring the Gigaset.net connection .....	22
Configuring the VoIP connection .....	23
Configuring a GSM connection .....	30
<b>Telephony – Audio:</b>	
<b>Optimising voice quality for VoIP connections</b> .....	<b>31</b>
Saving settings on the phone .....	34
Voice quality and infrastructure .....	34
<b>Telephony – Number Assignment:</b>	
<b>Assigning send and receive connections</b> .....	<b>35</b>
Assigning receive/send connections to bases/handsets, changing internal names .....	36
Assigning receive/send connections to the FAX port .....	38
Assigning receive connections to answering machines .....	39
Activating the fixed line network connection as an alternative connection .....	40
<b>Telephony – Call Divert:</b>	
<b>Activating Call Divert for VoIP connections</b> .....	<b>41</b>

<b>Telephony – Dialling Plans: Entering an access code</b> .....	<b>42</b>
<b>Telephony – Dialling Plans:</b>	
<b>Entering your own area code and extra codes</b> .....	<b>42</b>
<b>Telephony – Dialling Plans:</b>	
<b>Defining dialling plans – cost control</b> .....	<b>44</b>
Defining dialling plans .....	45
Activating/deactivating dialling plans .....	46
Deleting dialling plans .....	46
<b>Telephony – Network Mailboxes:</b>	
<b>Entering the network mailbox, activating/deactivating the network mailbox</b> .....	<b>47</b>
Entering numbers .....	47
Activating/deactivating the network mailbox .....	47
<b>Telephony – Advanced Settings:</b>	
<b>Setting DTMF signalling for VoIP</b> .....	<b>48</b>
<b>Telephony – Advanced Settings:</b>	
<b>Defining recall functions for VoIP (hook recall)</b> .....	<b>49</b>
<b>Telephony – Advanced Settings:</b>	
<b>Configuring call transfer via VoIP</b> .....	<b>50</b>
<b>Telephony – Advanced Settings:</b>	
<b>Defining local communication ports for VoIP</b> .....	<b>51</b>
<b>E-Mail:</b>	
<b>Making e-mail settings</b> .....	<b>53</b>
<b>Services – Info Services:</b>	
<b>Configuring/activating the display</b> .....	<b>54</b>
<b>Services – Online Directory:</b>	
<b>Selecting an online directory</b> .....	<b>55</b>
<b>Directory Transfer:</b>	
<b>Deleting directories and loading to/from the PC.</b> .....	<b>56</b>
Loading the directory file from the PC to the base/handset .....	57
Loading the directory from the base/handset to the PC .....	57
Deleting the directory .....	57
Understanding directory file content (vcf file) .....	58
<b>Management – Date &amp; Time:</b>	
<b>Copying the date/time from the time server</b> .....	<b>59</b>
<b>Management – Miscellaneous:</b>	
<b>Resgistering handsets</b> .....	<b>61</b>
<b>Management – Miscellaneous:</b>	

<b>Reducing radiation – activating/deactivating Eco Mode .....</b>	<b>61</b>
<b>Management – Miscellaneous:</b>	
<b>Changing system PIN of the phone .....</b>	<b>62</b>
<b>Management – Miscellaneous:</b>	
<b>Activating VoIP status message display .....</b>	<b>62</b>
<b>Management – Save &amp; Restore:</b>	
<b>Saving and restoring system settings .....</b>	<b>63</b>
Saving the settings for the base on your PC .....	63
Loading the settings from a file on the PC to the base .....	63
<b>Management – Firmware Update:</b>	
<b>Updating the base's firmware .....</b>	<b>64</b>
Starting the firmware update manually .....	64
Activating/deactivating the automatic version check .....	66
<b>Querying the phone status .....</b>	<b>67</b>
IP Configuration area .....	67
Software area .....	67
Fixed Line area .....	67
VoIP Status area .....	67
Gigaset.net area .....	68
GSM Connections area .....	69
Registered Handsets area .....	69
Date and Time area .....	69
<b>Index .....</b>	<b>70</b>

# Web configurator menu

---

<b>Home</b>			
<b>Settings</b>	IP Configuration		→ <a href="#">page 14</a>
	Telephony	Connections	→ <a href="#">page 18</a>
		Audio	→ <a href="#">page 31</a>
		Number Assignment	→ <a href="#">page 35</a>
		Call Divert	→ <a href="#">page 41</a>
		Dialling Plans	→ <a href="#">page 42</a>
		Network Mailboxes	→ <a href="#">page 47</a>
		Advanced Settings	→ <a href="#">page 48</a>
	E-Mail		→ <a href="#">page 53</a>
	Info Services		→ <a href="#">page 54</a>
	Online Directory		→ <a href="#">page 55</a>
	Directory Transfer		→ <a href="#">page 56</a>
	Management	Date & Time	→ <a href="#">page 59</a>
		Miscellaneous	→ <a href="#">page 61</a>
Save & Restore		→ <a href="#">page 63</a>	
Firmware Update		→ <a href="#">page 64</a>	
<b>Status</b>	Device		→ <a href="#">page 67</a>

# Connecting the PC with the telephone's Web configurator

---

## Prerequisites:

- ◆ A standard Web browser is installed on the PC e.g., Internet Explorer version 6.0 or higher, or Firefox version 1.0.4 or higher.
- ◆ The phone and PC are directly connected with each other via a router. The settings of any existing firewall installed on your PC allow the PC and phone to communicate with each other.

There are two ways of connecting your PC to the Web configurator of the base:

- ◆ Via the phone's IP address in the local network;
- ◆ Via the Gigaset configuration service, if the phone and PC are connected to the Internet (→ [page 7](#)).

### Please note

- ◆ Depending on your VoIP provider, it is possible that you will be unable to change individual settings in the Web configurator.
- ◆ The phone is **not** blocked while you select your settings in the Web configurator. You can make calls with your phone or modify settings at the same time.
- ◆ While you are connected to the Web configurator, it is blocked to other users. It cannot be accessed by more than one user at any time.

## Establishing a connection via the base's IP address

- ▶ Establish the current IP address of the base or handset. It is displayed when you open the following menu:

 →  **Settings** → **System** → **Local Network** (enter PIN if necessary)

Your phone's IP address can change if you have activated dynamic IP address assignment (→ [page 14](#)).

### Warning

If one of the four parts of the IP address contains leading zeros (e.g., 002), these zeros must not be entered in the Web browser address field. Otherwise, the Web browser will not be able to establish a connection to the Web configurator.

**Example:** The IP address 192.168.002.002 is displayed on the base. 192.168.2.2 should be entered in the address field.

- ▶ Launch the Web browser on your PC.
- ▶ Enter **http://** and the telephone's current IP address (for example: **http://192.168.2.2**) into the address field of the Web browser.
- ▶ Press the return key.

A connection is established to the phone's Web configurator.



## Establishing a connection via Gigaset config

**Prerequisite:** Your PC and base are connected to the Internet.

- ▶ Launch the Web browser on your PC.
- ▶ Enter one of the following URLs into the Web browser's address field:  
<http://www.gigaset-config.com>
- ▶ Press the return key.

You will receive a message stating that the connection has been forwarded to your base.

If several Gigaset phones can be reached via your Internet connection, you are asked which of these phones you would like to be connected to.

After successfully forwarding the connection, the Web configurator's **Login** page is displayed in the Web browser.

### **Please note**

The connection between the PC and the Web configurator is a local connection (LAN connection). The Internet is only accessed to establish the connection.

# Logging in to/off the Web configurator

## Logging in, setting the interface language

Once you have successfully established the connection, the **Login** Web page is displayed in the Web browser.

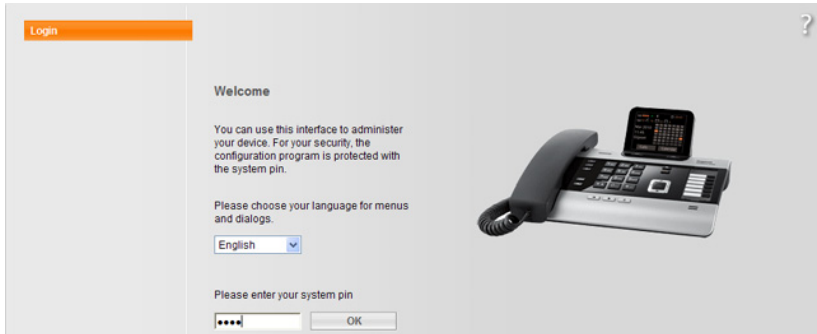


Figure 1 Start screen

You can select the language you want the menus and Web configurator dialogues to be displayed in. The language that is currently selected is displayed in the first field on the Web page.

- ▶ If necessary, click  to open the list of available languages.
- ▶ Select the language.

The Web page is reloaded in the selected language.

- ▶ Enter your base's system PIN (default setting: 0000) in the bottom field on the Web page to access the Web configurator functions.
- ▶ Click **OK**.

Once you have successfully logged in, the **Home** Web page opens with general information on the Web configurator.

If you enter an incorrect system PIN, a corresponding message is displayed. You are prompted to re-enter the PIN.

If you enter an incorrect system PIN a second time, the PIN field is blocked for a short time (greyed out). The duration of the block will double each time a PIN is subsequently entered incorrectly.

### Please note

- ◆ If the system PIN is still set as 0000 on the base (default setting), you will be notified during login that the unit is not secure and you should change the PIN. You can deactivate this security notice for subsequent logins by selecting the option "**Don't show this security advice again.**". Click on **OK** to close the dialog box.
- ◆ If you do not make any entries for a lengthy period (approx. 10 minutes), you are automatically logged off. The next time you try to make an entry or open a Web page, the **Login** Web page is displayed. Re-enter the system PIN to log back in again.
- ◆ Any entries that you did not save on the phone before automatic log-off will be lost.

## Logging off

In the menu bar ( → **page 10**) at the top right of every Web page in the Web configurator, you will see the **Log Off** command. Click **Log Off** to log off from the Web configurator.

### Warning

Always use the **Log Off** command to end the connection to the Web configurator. If, for example, you close the Web browser without logging off beforehand, it is possible that access to the Web configurator is blocked for a few minutes.

# Understanding the structure of the Web configurator pages

The Web configurator pages (Web pages) contain the UI elements shown in **Figure 2** (example).

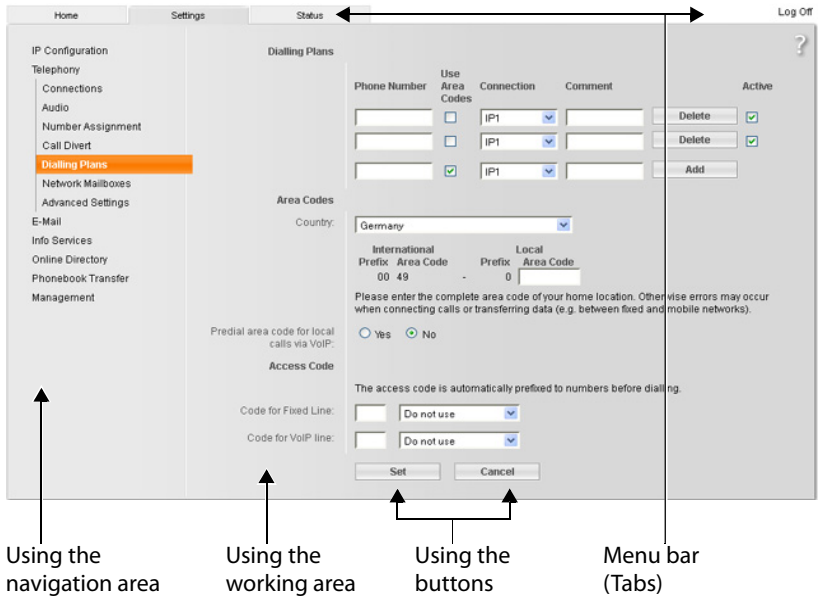


Figure 2 Example of the structure of a Web configurator page

## Menu bar

The Web configurator menus are displayed in the form of tab pages in the menu bar.

The following menus are available:

### Home

The home page opens once you have logged in to the Web configurator. It contains information on the Web configurator functions.

### Settings

This menu allows you to make settings on your phone.

If you select the **Settings** menu, a list containing this menu's functions is displayed in the navigation area (→ **page 11**).

### Status

This menu provides you with information about your phone.

## Log Off

You will find the **Log Off** function to the right of the menu bar on every Web page.

### Please note

For an overview of the Web configurator menu, see → [page 5](#).

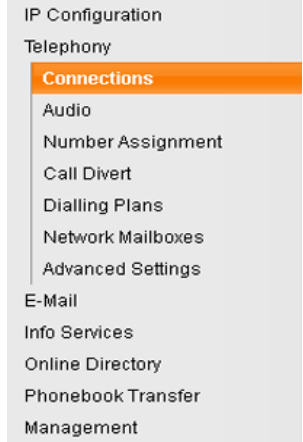
## Using the navigation area

The functions of the menu selected in the menu bar are listed in the navigation area (→ [page 10](#)).

If you select a function, the associated page containing information and input fields opens in the working area. The selected function is highlighted in orange.

If a function is assigned subfunctions, these are listed below the function as soon as you select the function (for example **Telephony**).

The relevant page for the first subfunction (highlighted in orange) is displayed in the working area.



## Using the working area

Depending on the function selected in the navigation area, information or dialogue boxes are displayed in the working area which allow you to make or change your phone settings.

### Making changes

Make settings via input fields, lists or options.

- ◆ There may be restrictions regarding the possible values for a field e.g., the maximum number of characters, entering special characters or certain value ranges.
- ◆ To open a list, click . You can choose between default values.
- ◆ There are two kinds of options:
  - Checkboxes: You can select one or more options from a list. Active options are indicated by , non-active options by . You can activate an option by clicking . The status of the other options in the list does not change. You can deactivate an option by clicking .
  - Alternative options (radio buttons). The active option in the list is indicated by , and the non-active by . You can activate an option by clicking . The previously activated option is deactivated. You can only deactivate an option by activating another option.

## Entering Cyrillic and Turkish characters

In the following section, the specified maximum number of characters permitted in a field refers to Latin characters and digits (1 character = 1 byte), i.e., 1 character means 1 byte.

Cyrillic and Turkish characters require 2 bytes each, e.g., with a field length of 16 characters, you can enter a maximum of 8 Cyrillic or Turkish characters.

If you enter too many characters into a field, the entry is rejected (not saved in the base). The "old" field content (or the default settings) are retained and displayed again when the Web page is updated. No warning/confirmation is given.

## Applying changes

As soon as you have made your change on a page, activate the new setting on the phone by selecting **Set**.

If your entry does not comply with the rules for this field, an appropriate error message is displayed. You can then repeat the input.

### Warning

Changes that have not been saved on your phone are lost if you move to another Web page or the connection to the Web configurator is lost e.g., due to exceeding the time limit (→ [page 9](#)).

## Using the buttons

Buttons are displayed in the bottom section of the working area. The following buttons are displayed depending on the function selected:

### Edit

Display connection data in the Web browser so that they can be edited.

### Browse

Select a file on the PC whose Web browser is linked to the Web configurator.

### Update Firmware

Start a firmware update.

### Delete

Delete a file/directory.

### OK

Perform an operation (e.g., log in to the Web configurator, delete connection).

### Cancel

Reject changes made on the Web page and reload the settings that are currently saved in your phone to the Web page.

### Restore

Load phone data (device settings) stored on the PC back on to the phone.

### Set

Store changes made on a Web page on the phone.

### Save

Save data that determines the settings/configuration of the base or a phone entry in a file on the PC.

**Transfer**

Transfer the base's directory to the PC and store it there.

**Delete Connection**

Delete a connection from the phone's configuration.

**<Add**

Transfers an available object highlighted in the list to the list of selected objects.

**Remove >**

Removes a highlighted object from the list of selected objects.

**Up**

Moves a highlighted list element one space up.

**Down**

Moves a highlighted list element one space down.

**Select VoIP Provider**

Starts the Wizard, which helps you download the general configuration data of your VoIP provider from the Internet.

**Next>**

In a multiple-step dialog (Wizard), closes the current step, and moves to the next step.

**<Back**

In a multiple-step dialog, cancels the current step, and moves one step back so that you can repeat the step.

**Finish**

Close the multiple-step dialog (Wizard). Apply the changes.

## Opening Web pages

A brief outline of how to navigate to the individual Web configurator functions is given below.

**Example****Defining dialling plans:****Settings → Telephony → Dialling Plans**

To open the Web page, proceed as follows after registration:

- ▶ Select the **Settings** menu in the menu bar.
- ▶ Click the **Telephony** function in the navigation area.  
The **Telephony** subfunctions are displayed in the navigation tree.
- ▶ Select the **Dialling Plans** subfunction.

# IP Configuration – Connecting to the LAN

---

## Assigning the IP address

Select the necessary settings for operating your phone in your local network and for connecting it to the Internet, if necessary. For more detailed explanations of the individual components/terms, see the glossary in the user guide for the phone.

▶ Open the **Settings** → **IP Configuration** Web page.

### Address Assignment area

Specify the base's address in the LAN.

#### IP address type

Select **Obtained automatically**, if you want your phone to be assigned a dynamic IP address by a DHCP server in your local network. No further settings are needed. The following fields in this section are greyed out and deactivated.

Select **Static** if you would like to set up a static local IP address for your phone. A static IP address is useful, for example, if port forwarding or a DMZ is set up on the router for the phone. The phone often requires a static IP address, e.g., if you connect the phone directly to the PC.

The following fields are only activated if you select **IP address type** = **Static**:

#### IP address

Enter an IP address for your phone. This IP address allows your phone to be reached by other parties in your local network (e.g., PC).

192.168.2.2 is the default.

Please note:

- The IP address must be from the address block reserved for private use on the router. This is generally in the range 192.168.0.1 – 192.168.255.254 with **Subnet mask** 255.255.255.0. The subnet mask determines that the first three parts of the IP address must be identical for all subscribers in your LAN.
- The static IP address must not belong to the address block (IP pool range) that is reserved for the router's DHCP server. It must also not be used by another device on the router.

If necessary, check the settings on the router.

#### Subnet mask

Enter the subnet mask for your device's IP address. For addresses from the address block 192.168.0.1 – 192.168.255.254, the subnet mask 255.255.255.0 is generally used. This is preconfigured when the phone is supplied.

#### Default Gateway

Enter the IP address for the standard gateway through which the local network is connected to the Internet. This is generally the local (private) IP address for your router (e.g., 192.168.2.1). Your phone requires this information to be able to access the Internet.

192.168.2.1 is the default.



### Preferred DNS server

Enter the IP address for the preferred DNS server. DNS (Domain Name System) allows you to assign public IP addresses to symbolic names. The DNS server is required to convert the DNS name into the IP address when a connection is being established to a server.

You can specify your router's IP address here. The router forwards phone address requests to its DNS server.

192.168.2.1 is the default.

### Alternate DNS server (optional)

Enter the IP address for the alternate DNS server that should be used in situations where the preferred DNS server cannot be reached.

- ▶ Select **Set** to save the changes.

Or

- ▶ Select **Cancel** to reject the changes.

After you have changed the IP configuration, the base is rebooted. You are logged off the Web configurator. The **Login** Web page is displayed after the reboot.

## Allowing access from other networks

The default setting for your phone only allows you to access your phone's Web configurator via a PC that is in the same local network as your phone. The subnet mask of the PC must match that of the phone.

You can also allow access from PCs in other networks.

### Warning

Authorising access from other networks increases the risk of unauthorised access. It is therefore recommended that you deactivate remote access if you no longer require it.

- ▶ Open the **Settings** → **IP Configuration** Web page.

### Remote Management area

- ▶ Select **Yes** to authorise access from other networks.

To deactivate remote access, select **No**. Access is then limited to PCs in your own local network.

- ▶ Enter a name for your base station in the **Device Name in the Network** field up to 75 characters). The phone can be addressed with this name within the local network.

Access to the Web configurator services from other networks is only possible if your router is set accordingly. The router must pass on the service requests from "outside" to Port 80 (default port) of the phone. Be sure to read the user guide for your router.

To establish a connection, the public IP address or the DNS name of the router and, where applicable, the port number on the router must be indicated in the Web browser of the remote PC.

## Entering an HTTP proxy server (only when connected to an internal company network)

Direct connections between network subscribers and the Internet are often not permitted within internal company or organisation networks (Intranet). In such cases, all HTTP calls from the network are "transferred" by a proxy server. The proxy server is a computer or program within the network.

If your phone is connected to such a network, you must store the address of this HTTP proxy server on the phone and activate handling of HTTP calls via the HTTP proxy server.

Only then will you be able to access the online directory or display weather information etc. (information services).

- ▶ Open the **Settings** → **IP Configuration** Web page.

### HTTP proxy area

#### Enable proxy

Select **Yes** if your phone is to handle HTTP calls via your network's HTTP proxy server.

If you select **No**, the phone will attempt to access the Internet directly.

#### Proxy server address

Enter the URL of the proxy server to which your phone is to send HTTP calls.

The proxy server then creates the connection to the Internet.

#### Proxy server port

Enter the communication port used on the HTTP proxy server (number between 0 and 55,000). It is mainly port 80 that is used.

- ▶ Select **Set** to save your settings.

## Accessing to a tagged VLAN

Details in this section are only required if you connect your base station to a local network that is divided into virtual subnetworks (VLAN – Virtual Local Area Network). In a tagged VLAN, data packets are assigned to the individual subnetworks via tags (markings) that consist of a **VLAN Identifier** and the **VLAN Priority**, amongst others. The **VLAN Identifier** identifies the subnetwork. The **VLAN Priority** allows voice data transport to take priority, for example.

You will need to save the **VLAN Identifier** / **VLAN Priority** on the base station. Your VLAN provider will supply you with this data.

#### Use VLAN Tagging

Select **Yes** if you want the base station to use VLAN tagging.

#### VLAN Identifier

Enter the VLAN Identifier. Numbers ranging from 0–4094 (12-bit values) are permitted.

#### VLAN Priority

Enter the VLAN Priority. Numbers ranging from 0–7 (3-bit values) are permitted.

If the details in **VLAN Identifier** or **VLAN Priority** are incorrect, you will no longer be able to establish a LAN connection to and from the base station. You must carry out a hardware reset (reset the base station using the paging key). This means that all base station settings are lost.

### **Saving or rejecting changes**

▶ Click on the **Set** button to save the changes.

Or

▶ Click on the **Cancel** button to reject the changes.

After you have changed the VLAN settings, the base is rebooted. You are logged off the Web configurator. The **Login** Web page is displayed after the reboot.

# Telephony – Connections:

## Configuring phone connections

Open the **Settings → Telephony → Connections** Web page for a list with all possible connections (phone numbers) that you can configure or are already available for your base.

You can use this list to configure and manage the connections of your base.

This list is divided into the following areas:

### ◆ Fixed Line Connection

**Prerequisite:** Your base is (or was last) connected with the analogue fixed line network.

You do not have to configure the fixed line network connection. You can make or receive calls on the fixed line network connection once your telephone is connected to the fixed line network.

You can also change the settings for the fixed line network connection ( → [page 21](#)).

### ◆ IP Connection

You can assign up to six VoIP connections (VoIP phone numbers) to your base. You need to set up a VoIP account with a VoIP provider for each VoIP phone number. You must save the access data for each account and for the relevant VoIP provider in the phone.

A list entry is available for each VoIP connection ( → [Figure 3](#)) which is used to configure and manage the connection ( → [page 23](#)).

IP Connections				
	Name	Status	Active	
1.	IP1 Other Provider	Registration failed	<input checked="" type="checkbox"/>	<a href="#">Edit</a>
2.	IP2 Other Provider	Registration failed	<input checked="" type="checkbox"/>	<a href="#">Edit</a>
3.	IP3 Other Provider	Disabled	<input type="checkbox"/>	<a href="#">Edit</a>
4.	IP4 Other Provider	Disabled	<input type="checkbox"/>	<a href="#">Edit</a>
5.	IP5 Other Provider	Disabled	<input type="checkbox"/>	<a href="#">Edit</a>
6.	IP6 Other Provider	Disabled	<input type="checkbox"/>	<a href="#">Edit</a>
7.	Gigaset.net Gigaset Communications	Disabled	<input type="checkbox"/>	<a href="#">Edit</a>

Figure 3 List of possible VoIP connections

### ◆ Gigaset.net

Your phone is preassigned with a Gigaset.net phone number. The Gigaset.net connection is ready to use once the base is connected to the internet. In Gigaset.net, you can call other Gigaset.net subscribers free of charge. Further

information about Gigaset.net can be found in the long user guide for the phone on the enclosed CD.

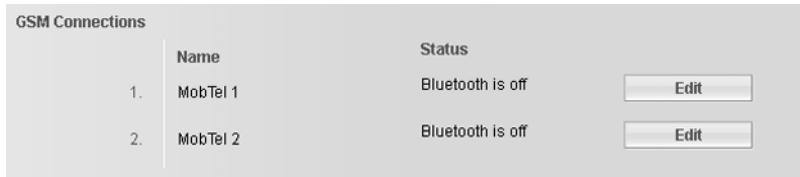
To find out which settings are possible for Gigaset.net, see → [page 30](#).

#### ◆ **GSM Connections**

You can also make calls on your base and/or a registered handset via the GSM connection of your Bluetooth GSM mobile phone (call external parties via the GSM connection of the mobile phone or receive calls to the GSM connection).

To do this, you can register up to five mobile telephones (i.e., save in the **Known Devices** list), which you can connect in alternation with your base.

The **Known Devices** list can only be edited on the base. Further information can be found in the long user guide for the phone on the CD.



GSM Connections		Status	
	Name		
1.	MobTel 1	Bluetooth is off	<input type="button" value="Edit"/>
2.	MobTel 2	Bluetooth is off	<input type="button" value="Edit"/>

Figure 4 List of GSM connections

The list of connections contains the following information:

#### **Name**

The name that you have specified for the connection is displayed, otherwise the default name is shown (**IP1** up to **IP6** for VoIP connections, **Fixed Line** for the fixed line network connection, and **Gigaset.net**).

For GSM connections, the Bluetooth name is displayed under which the corresponding mobile phone is stored in the list of "Known Devices" on the base.

You can change this name. Thereto select the **Edit** button next to the GSM connection and enter a name of up to 16 characters.

For VoIP connections, the name of the network provider is also displayed. If the name is unknown, the display will show **Other Provider**.

## Status

Indicates the status of the connection.

Possible values for VoIP connections and the Gigaset.net connection are:

### **Registered**

The connection is activated. The phone has been successfully registered. You can use the connection to make calls.

### **Disabled**

The connection is deactivated. The phone is not registering with the corresponding account with the VoIP service. You cannot use the connection to make or receive calls.

### **Registration failed / Server not accessible**

Your phone was unable to register with the VoIP service, e.g., because the VoIP access data is incorrect or incomplete or the phone is not connected to the Internet. Further information can be found in the long user guide for the base on the enclosed CD.

Possible values for the fixed line network connection are:

### **Connected**

The phone is connected to the fixed line network.

Possible values for the GSM connections are:

### **Registered**

Bluetooth is activated on the base. The mobile phone is registered to the base, i.e. it appears in the **Known Devices** list. However, the mobile phone is not yet activated. The **Connect Cell Phone** option is **not** set for this mobile phone. No calls can be made from the base via the corresponding GSM connection.

### **Active**

The mobile phone is displayed in the **Known Devices** list and is active. The **Connect Cell Phone** option is set for this mobile phone.

### **Bluetooth is off**

Bluetooth is deactivated on the base.

**Active** (only for VoIP connections and Gigaset.net connection)

You can use the option in the **Active** column to activate () and deactivate () VoIP connections. If a connection is deactivated, the phone will not register for this connection. The connection can be activated/deactivated by clicking directly on the option. The change does not need to be saved.

To configure a connection or to change the configuration of a connection:

- ▶ Select the **Edit** button next to the connection.

## Setting the fixed line network connection

- ▶ Open the **Settings** → **Telephony** → **Connections** Web page.
- ▶ Select **Edit** in the **Fixed Line Connection** area.

### Connection Name or Number

You can define a name for your telephone connection, which replaces the default name **Fixed Line** in displays or lists. Enter a name of up to 16 characters or the phone number of your fixed line network connection.

### Dialling mode

The following dialling modes can be selected:

#### Pulse dial

Pulse dialling mode (PD) is used only for a few old PABXs.

#### DTMF

Tone dialling (DTMF) is now the most common dialling mode.

### Recall

Your phone comes preset with a flash for general operation of the phone on the main connection. The flash specifies the duration of the line interruption used to send control signals to the exchange or the telecommunications system (transfer (ECT), setting up a consultation call, etc.). For operation on a PABX, you may have to change this value. Please refer to the user guide for your PABX.

Select the required flash from the list.

- ▶ Select **Set** to save your settings.

Or:

- ▶ Click the **Cancel** button to reject the changes you have made.

This returns you to the list of connections.

## Configuring the Gigaset.net connection

- ▶ Open the **Settings** → **Telephony** → **Connections** Web page.
- ▶ Select **Edit** in the **Gigaset.net** area.

### Connection Name

Enter a name for the Gigaset.net connection (max. 16 characters). This name is displayed on the base e.g., in the lists for receive/send connections and in the call lists as receive connection (number that the caller dialed).

If you do not enter a name, the default name **Gigaset.net** is used.

### STUN enabled

The Gigaset.net connection is preconfigured in your phone. The Gigaset.net uses a STUN server as standard. In the sent data packets, Gigaset.net replaces the private IP address of your phone with its public IP address.

If you operate your phone behind a router with symmetrical NAT, STUN cannot be used. Otherwise, when making Gigaset.net calls you will not be able to hear the caller.

In this case, deactivate STUN for the Gigaset.net connection.

- ▶ Select **No** to deactivate STUN.
- ▶ Select **Yes** if you want your phone to use STUN.
- ▶ Select **Set** to save the changes.

Or:

- ▶ Click the **Cancel** button to reject the changes you have made.

This returns you to the list of connections.

### Activating/deactivating the Gigaset.net connection

- ▶ In the list of connections in the **Gigaset.net** area: Use the option in the **Active** column to activate () or deactivate () the Gigaset.net connection.

#### Please note

If you do not use your Gigaset.net connection for six months, it is automatically deactivated. You cannot be reached for calls from Gigaset.net.

The connection is reactivated:

- ◆ As soon as you start a search in the Gigaset.net directory
- ◆ make a call via Gigaset.net, i.e., dial a number ending in #9 (two attempts may be necessary) or
- ◆ activate the connection via the Web configurator as described above.



# Configuring the VoIP connection

- ▶ Open the **Settings** → **Telephony** → **Connections** Web page.
- ▶ Select the **Edit** button next to the VoIP connection that you want to configure or the configuration you wish to change.

This will open a Web page where you can make the settings that your phone needs to access your provider's VoIP server.

The Web page always displays the following areas:

- ◆ **IP Connection** ( → [page 23](#)),
- ◆ **Auto Configuration** ( → [page 23](#))
- ◆ **Profile Download** ( → [page 24](#))
- ◆ **Personal Provider Data** ( → [page 25](#)).

The areas

- ◆ **General data of your service provider** and ( → [page 26](#))
- ◆ **Network data for your service provider** ( → [page 27](#))

can be shown and hidden by selecting the **Show Advanced Settings** and **Hide Advanced Settings** buttons.

You must enter the VoIP provider's general access data in these areas. You can download this data from the Internet for several VoIP providers ( → "[Profile Download area](#)", [page 24](#)).

- ▶ Make the settings on the Web page.
- ▶ Save them in the phone ( → [page 29](#)).
- ▶ Activate the connection if necessary ( → [page 29](#)).

## IP Connection area

### Connection Name or Number

Enter a name for the VoIP connection or the VoIP phone number (max. 16 characters). This name is used to display the connection on the base and in the Web configurator interface, for example when assigning the receive and send connections and for call display.

## Auto Configuration area

The entire configuration process for a VoIP connection is automated for some VoIP providers. You can download the necessary VoIP access data to your phone from the Internet.

### Prerequisites:

- ◆ You have received an **auto configuration code** from your VoIP provider.
- ◆ The general access data for your VoIP provider is available for downloading.

You can download all the data required for VoIP access from the Internet:

- ▶ Enter the auto configuration code you received from your VoIP provider in the **Auto Configuration** area in the **Auto Configuration Code** field (maximum 32 characters).
- ▶ Select the **Start Auto Configuration** button.

The telephone establishes a connection to the Internet and downloads all data required for the VoIP connection, i.e., the general provider information and your personal provider data (account data) are saved to your base.

If you have already entered details on the Web page, this is deleted as soon as **Start Auto Configuration** is selected. The fields in the **Personal Provider Data** and **General data of your service provider** areas and the server addresses in the **Network data for your service provider** area are overwritten by the downloaded data.

Generally, you should not have to enter any additional data on this Web page.

#### Please note

If the message **Download of settings not possible! File is corrupt!** appears, no data will be loaded onto the phone. Possible causes of this are:

- ◆ The incorrect code has been entered (e.g., upper/lower case rules have not been followed). If necessary, enter the code again.
- ◆ The file that has been downloaded is invalid. Please consult your VoIP provider.

When the download is complete, the **Connections** list will be displayed.

- ▶ Activate the connection as described on [page 29](#).

You can then be reached on the corresponding VoIP phone number.

## Profile Download area

**Prerequisite:** You must have received account data from your VoIP provider (e.g., **Authentication name**, **Authentication password**).

Profile files of the most important VoIP providers are available to download on the Gigaset configuration server. The address for the server is stored in your phone (→ [page 64](#)).

To load the data onto your telephone, proceed as follows:

- ▶ Select **Select VoIP Provider** in the **Profile Download** area. This will display information on the download procedure.

#### Please note

If you select the **Select VoIP Provider** button, any changes that have been made to the Web page will be saved and checked. Values may need to be corrected before the **Select VoIP Provider** operation is started.

The download procedure consists of several steps:

- ▶ Select the **Next** button.
- ▶ From the list, select the country for which the list of VoIP providers is to be loaded.
- ▶ Select the **Next** button.
- ▶ Select your VoIP provider from the list.

If your provider is not included in the list, select **Other Provider**. In this case you will have to enter the general provider data by hand (see "**General data of your service provider area**" and "**Area: Network data for your service provider**" below).

- ▶ Select the **Finish** button.

#### **Please note**

If only one country is available, the country list will not be displayed. The list of provider is then displayed immediately.

The details of the selected provider are loaded to your phone and displayed under **General data of your service provider** ( → [page 26](#)) and **Network data for your service provider** ( → [page 27](#)). You do not have to make any further entries in these areas.

The **Provider** field shows the name of the VoIP provider selected or the **Other Provider**. A link to the provider's homepage is displayed where available.

In the **Profile Version** field the version of the currently loaded profile is displayed. To complete configuration of your VoIP connection, enter your account data in the **Personal Provider Data** area.

#### **Please note**

After the first download of the VoIP provider settings, your phone will check whether a newer version of the file for your VoIP provider is available from the Internet each day on the configuration server ( → [page 66](#)).

## **Personal Provider Data area**

Enter the configuration data that is required to access your VoIP provider's SIP service. This data can be obtained from your VoIP provider.

The field names (**Authentication name** etc.) of this area listed below are default names and may change. If you have already downloaded the provider's general details ("Select VoIP Provider" button, see above), field entries will be replaced by provider-specific names to facilitate orientation (e.g., SIP-ID instead of **Authentication name**).

### **Authentication name**

Specify the registration or authentication ID agreed with your VoIP provider (maximum 32 digits). The registration ID serves as the access ID that your phone must specify when registering with the SIP proxy/registrar server. The **Authentication name** is usually identical to the **Username**, i.e., to your Internet phone number.

### **Authentication password**

Enter the password that you have agreed with your VoIP provider in the **Authentication password** field (maximum 32 characters). The phone needs the password when registering with the SIP proxy/registrar server.

### **Username**

Enter the caller ID for your VoIP provider account (maximum 75 characters). This ID is usually identical to the first part of your SIP address (URI, your Internet phone number).

### Example

Example: If your SIP address is "987654321@provider.com", enter "987654321" as the **Username**.

### Display name (optional)

Enter any name that should be shown in the other caller's display when you call them via the Internet (example: Anna Sand). All characters in the UTF8 character set (Unicode) are permitted. The name must not exceed 32 characters.

If you do not enter a name, your **Username** or your VoIP phone number will be displayed.

Ask your VoIP provider if this feature is supported.

## General data of your service provider area

If you have downloaded the general settings for the VoIP provider from the configuration server (→ [page 24](#)), then the fields in this area will be preset with the data from the download. Generally speaking, you do not need to configure any settings in this area.

### Domain

Specify the last part of your SIP address (URI) here (maximum 74 characters).

### Example

For the SIP address "987654321@provider.com", enter "provider.com" in **Domain**.

### Proxy server address

The SIP proxy is your VoIP provider's gateway server. Enter the IP address or the (fully-qualified) DNS name of your SIP proxy server (maximum 74 characters).

**Example:** myprovider.com.

### Proxy server port

Enter the number of the communication port that the SIP proxy uses to send and receive signalling data (SIP port).

Port 5060 is used by most VoIP providers.

### Registration server

Enter the (fully-qualified) DNS name or the IP address of the registrar server (maximum 74 characters).

The registrar is needed when the phone is registered. It assigns the public IP address/port number that were used by the phone on registration to your SIP address (**Username@Domain**). With most VoIP providers, the registrar server is identical to the SIP server. **Example:** reg.myprovider.com.

### Registration server port

Enter the communication port used on the registrar. Port 5060 is used in most cases.

### Registration refresh time

Enter the time intervals (in seconds) at which the phone should repeat the registration with the VoIP server (SIP proxy) (a request will be sent to establish a session). The repeat is required so that the phone's entry in the tables of the SIP

proxy is retained and the phone can therefore be reached. The repeat will be carried out for all activated VoIP connections.

The default is 180 seconds.

If you enter 0 seconds, the registration will not be repeated periodically.

## Area: Network data for your service provider

### Please note

If you have downloaded the general settings for your VoIP provider from the Gigaset configuration server (→ [page 24](#)), then some fields in this area will be preset with the data from the download (e.g., the settings for the STUN server and outbound proxy).

If your phone is connected to a router with NAT (Network Address Translation) and/or a firewall, you must select some settings in this area so that your phone can be reached from the Internet (i.e., can be addressed).

Through NAT, the IP addresses of subscribers in the LAN are concealed behind the public IP address of the router.

### For incoming calls

If port forwarding is activated or a DMZ is set up for the phone on the router, no special settings are required for incoming calls.

If this is not the case, an entry in the NAT routing table (in the router) is necessary in order for the phone to be reached. This entry is created when the phone is registered with the SIP service. In the interest of security, this entry is automatically deleted at certain intervals (session timeout). The phone must therefore confirm its registration at certain intervals (→ [NAT refresh time on page 28](#)) so that the entry stays in the routing table.

### For outgoing calls

The phone needs its public address in order to receive caller voice data.

There are two possibilities:

- ◆ The phone requests the public address from a STUN server on the Internet (Simple Transversal of UDP over NAT). STUN can only be used with asymmetric NATs and non-blocking firewalls.
- ◆ The phone does not direct the connection request to the SIP proxy but to an outbound proxy on the Internet that supplies the data packets with the public address.

The STUN server and outbound proxy are used alternately to work around the NAT/firewall in the router.

### STUN enabled

Select **Yes** if you want your phone to use STUN as soon as it is used on a router with asymmetric NAT.

### STUN server address

Enter the (fully-qualified) DNS name or the IP address of the STUN server on the Internet (maximum 74 characters).

If you selected the **Yes** option in the **STUN enabled** field, you must enter a STUN server.

#### **STUN server port**

Enter the number of the communication port on the STUN server. The default port is 3478.

#### **STUN refresh time**

Enter the time intervals at which the phone should repeat the registration with the STUN server. The repeat is required so that the entry of the phone in the tables of the STUN server is retained. The repeat will be carried out for all activated VoIP connections.

Ask your VoIP provider for the **STUN refresh time**.

The default is 240 seconds.

If you enter 0 seconds, the registration will not be repeated periodically.

#### **NAT refresh time**

Specify the intervals at which you want the phone to update its entry in the NAT routing table. Specify an interval in seconds that is a little shorter than the NAT session timeout.

As a rule you should not need to change the preconfigured value for the **NAT refresh time**.

#### **Outbound proxy mode**

Specify when the outbound proxy should be used.

##### **Always**

All signalling and voice data sent by the phone is sent to the outbound proxy.

##### **Automatic**

Data sent by the phone is only sent to the outbound proxy when the phone is connected to a router with symmetric NAT or a blocking firewall. If the phone is behind an asymmetric NAT, the STUN server is used.

If you have set **STUN enabled** = **No** or have not entered a STUN server, the outbound proxy is always used.

##### **Never**

The outbound proxy is not used.

If you do not make an entry in the **Outbound server address** field, the phone behaves independently of the selected mode, as with **Never**.

#### **Outbound server address**

Enter the (fully qualified) DNS name or the IP address of your provider's outbound proxy (maximum 74 characters).

#### **Please note**

With many providers, the outbound proxy is identical to the SIP proxy.

#### **Outbound proxy port**

Enter the number of the communication port used by the outbound proxy.

The default port is 5060.

## Saving settings on the phone

- ▶ Select **Set** to save the changes.  
The **Connections** list is displayed after saving.

Or:

- ▶ Click the **Cancel** button to reject the changes you have made.

Or:

- ▶ Click the **Delete Connection** button to delete the VoIP connection from the configuration. You can no longer be contacted via this phone number or make calls via this connection.

If the connection you have deleted was the send connection of an internal subscriber then a new send connection will automatically be assigned to this internal subscriber. This is the fixed line network number if the phone is connected to the analogue fixed line network.

### Please note

If you do not make any entries for a prolonged period, the connection to the Web configurator is automatically terminated. Unsaved entries are lost. If necessary, save entries as you go along. You can subsequently continue the entry and make changes if necessary.

## Activating a new VoIP connection

If you have configured a new VoIP connection, you must also activate it.

### In the Connections list:

- ▶ Activate the relevant option in the **Active** column ( = activated).

Your phone will register itself with the VoIP provider using the relevant access data. Refresh the Web page (e.g., by pressing F5).

The **Status Registered** column will appear if registration was successful. You can now be reached on this VoIP phone number.

After making a new entry, the VoIP connection is assigned as a receive connection to the base, all registered handsets, the answering machine **AM 1**, and the fax machine, if connected.

You can change the assignment ( → [page 35](#)).

## Configuring a GSM connection

- ▶ Open the **Settings** → **Telephony** → **Connections** Web page.
- ▶ Select the **Edit** button next to the GSM connection that you want to configure.

### Connection Name or Number

Enter the number of the mobile phone or define a name for the GSM connection (max. 16 characters). This name is displayed on the base e.g., in the **Known Devices** list, in the lists for receive/send connections and in the call lists as receive connection (number that the caller dialled).

- ▶ Select **Set** to save the changes.

Or:

- ▶ Click the **Cancel** button to reject the changes you have made.

This returns you to the list of connections.

Or:

- ▶ Click the **Delete Connection** button to delete the GSM connection from the configuration. You can no longer be contacted via this phone number or make calls via this connection.

If the connection you have deleted was the send connection of an internal subscriber then a new send connection will automatically be assigned to this internal subscriber. This is the fixed line network number if the phone is connected to the analogue fixed line network.



# Telephony – Audio:

## Optimising voice quality for VoIP connections

---

You can make general and connection-specific settings to improve the voice quality for VoIP telephony.

► Open the **Settings** → **Telephony** → **Audio** Web page.

The voice quality for VoIP connections is mainly determined by the **voice codec** used for transferring the data and the available **bandwidth** of your DSL connection.

In the case of the voice codec, the voice data is digitalised (coded/decoded) and compressed. A "better" codec (better voice quality) means more data needs to be transferred, i.e., perfect voice data transfer requires a DSL connection with a larger bandwidth.

The following voice codecs are supported by your phone:

### **G.722**

Excellent voice quality. The **broadband** speech codec **G.722** works at the same bit rate as G.711 (64 kbit/s per speech connection) but with a higher sampling rate. This allows higher frequencies to be played back. The speech tone is therefore clearer and better than for the other codecs (High Definition Sound Performance).

Other HDSP compatible handsets include: Gigaset S67H, S68H, SL37H.

### **G.711 a law / G.711 $\mu$ law**

Excellent voice quality (comparable with ISDN). The necessary bandwidth is 64 kbit/s per voice connection.

### **G.726**

Good voice quality (inferior to that with G.711 but better than with G.729).

Your phone supports G.726 with a transmission rate of 32 kbit/s per voice connection.

### **G.729**

Average voice quality. The necessary bandwidth is less than or equal to 8 kbit/s per voice connection.

Both parties involved in a phone connection (caller/sender and recipient) must use the same voice codec. The voice codec is negotiated between the sender and the recipient when establishing a connection.

You can influence the voice quality by selecting (bearing in mind the bandwidth of your DSL connection) the voice codecs your phone is to use, and specifying the order in which the codecs are to be suggested when a VoIP connection is established.

## Settings for Bandwidth area

The settings in this area affect all VoIP connections.

### Allow 1 VoIP call only

You can usually make up to four VoIP calls at the same time on your phone. If, however, your DSL connection has a narrow bandwidth, there may be problems if multiple VoIP calls are made at the same time. The data is no longer transferred properly (long voice delay, data losses etc.).

- ▶ Select **Yes** after **Allow 1 VoIP call only** to prevent any further parallel VoIP phone connections being established.
- ▶ If you wish to permit multiple parallel VoIP connections, select **No**.

#### Please note

If only one VoIP connection is permitted, the following VoIP network services will **no** longer be available:

- ◆ Call waiting  
Call waiting is not displayed during a call via VoIP.
- ◆ External consultation call from a VoIP call
- ◆ Call swapping and initiating a conference call via VoIP

### Voice Quality

Default settings for the codecs used are stored in your phone: one setting optimised for low bandwidths and one for high bandwidths.

- ▶ Activate one of the options **Optimized for low bandwidth** / **Optimized for high bandwidth** if you wish to accept a default setting for all VoIP connections. The settings are shown in the **Settings for Connections** area and cannot be changed.
- ▶ Activate the **Own Codec preference** option if you wish to select and set connection-specific voice codecs yourself (see "**Settings for Connections area**").

## Settings for Connections area

In this area you can make specific settings for each of your VoIP connections.

You can make the following settings for each VoIP connection configured on your phone:

### Volume for VoIP Calls

Depending on the VoIP provider, it is possible that the received voice/earpiece volume is too low or too high, so that adjusting the volume via the handset is not adequate.

Specify whether the received volume range is too high or too low. The following options are available:

#### Low

Voice/earpiece volume is too high. Activate this option to reduce the volume by 6 dB.

#### Normal

The voice/earpiece volume does not need to be raised/lowered.

## High

Voice/earpiece volume is too low. Activate this option to increase the volume by 6 dB.

### Selected codecs / Available codecs

**Prerequisite:** The **Own Codec preference** option is activated for the **Voice Quality** in the **Settings for Bandwidth** area.

In the **Selected codecs** and **Available codecs** lists, you can define your own codec preference tailored to your DSL connection.

Select the voice codecs your phone is to use, and specify the order in which the codecs are to be suggested when a VoIP connection is established via this VoIP connection.

- ▶ Apply the voice codecs that your phone is to suggest for outgoing calls into the **Selected codecs** list.  
To do this, in the **Available codecs** list select the voice codec that you want to apply (you can mark several entries using the Shift key or the Ctrl key). Select **<Add**.
- ▶ Move the voice codecs that you do not want the phone to use into the **Available codecs** list.  
Select the voice codecs in the **Selected codecs** list (see above) and click the **Remove>** button.
- ▶ Sort the voice codecs in the **Selected codecs** list into the order in which they should be suggested to the receiving device when a connection is established. To do this, use the **Up** and **Down** buttons.

When establishing a VoIP connection, the phone suggests the first voice codec in the **Selected codecs** list to the receiving device to begin with. If the receiving device does not accept the codec (e.g., because it is not supported), the second voice codec on the list is suggested etc.

If the receiving device does not accept any of the voice codecs in the **Selected codecs** list, the connection is **not** established. An appropriate message will be displayed on the handset.

If the phone always starts by trying to establish a broadband connection, put the **G.722** codec at the top of the **Selected codecs** list.

#### Please note

- ◆ Only deactivate codecs (put them in the **Available codecs** list) if there is a particular reason. The more codecs that are deactivated, the greater the risk that calls cannot be established due to unsuccessful codec negotiations. In particular you can only establish broadband connections if you permit the **G.722** codec.
- ◆ With incoming calls, all supported voice codecs are always permitted.

## Settings for Codecs area

To save additional bandwidth and transmission capacity, on VoIP connections that use the **G.729** codec you can suppress the transmission of voice packets in pauses ("Silence Suppression"). Then, instead of the background noises in your environment, your caller hears a synthetic noise generated in the receiver.

**Please note:** "Silence Suppression" can sometimes lead to a deterioration in the voice quality.

- ▶ In the **Enable Annex B for codec G.729** field, state whether the transmission of data packets during pauses should be suppressed when using the **G.729** codec, (select **Yes**).

## Saving settings on the phone

- ▶ Select **Set** to save the settings for the voice quality.

If you have changed the setting for **Enable Annex B for codec G.729** in the **Settings for Codecs** area, the base must be restarted. You are logged off the Web configurator. The **Login Web** page is displayed after the reboot.

### Please note

Observe the following for good voice quality:

- ◆ When making calls using VoIP, avoid performing other Internet activities (e.g., surfing the Internet).
- ◆ Please note that voice delays can occur depending on the codec used and the network capacity utilisation.

## Voice quality and infrastructure

Using your Gigaset, you can make calls with good voice quality via VoIP.

However, your phone's performance with VoIP – and therefore the voice quality – also depends on the properties of the entire infrastructure.

The following components from your VoIP provider may impact performance:

- ◆ Router
- ◆ DSLAM
- ◆ DSL transmission line and speed
- ◆ Connection paths over the Internet
- ◆ If applicable, other applications that also use the DSL connection

In VoIP networks, voice quality is affected by various things including the "quality of service" (QoS). If the entire infrastructure has QoS, voice quality is higher (fewer delays, less echoing, less crackling etc.).

If, for example, the router does not have QoS, then the voice quality is not as good. Please see the specialist documentation for further information.

# Telephony – Number Assignment:

## Assigning send and receive connections

---

You can specify which phone connection is assigned as receive and/or send connections to the base and any connected device.

### Please note

The following connections are assigned to the base and connected devices if you do not assign any of the connections:

- ◆ Receive connections of the base and the registered handsets: All connections of the phone (fixed line network, Gigaset.net and VoIP) and the GSM connection of your mobile phone providing it is registered and activated via Bluetooth (connected; **GSM**).
- ◆ Send connections of the base and the registered handsets: The analogue fixed line network connection that you entered first in the phone configuration.
- ◆ All connections (including of the GSM connection of a mobile phone connected via Bluetooth) are assigned to the first answering machine as receive connections. The other two answering machines are not assigned receive connections.
- ◆ If the fax connection is active (see the user manual for the base on the enclosed CD), all connections (including of the GSM connection of a mobile phone connected via Bluetooth) are also assigned to the fax machine as receive connections. The analogue fixed line network connection is assigned to it as the send connection.

## Assigning receive/send connections to bases/handsets, changing internal names

You can assign as many of your connections as you wish to the base and all registered handsets. Receive connections determine which handset(s) will ring when a call is received.

You can assign one of your connections as a send connection to the base and each handset. The send connection specifies which phone number/VoIP account is charged for calls from the base or handset. **Exceptions:** A dialling rule has been defined for the dialled phone number (→ [page 44](#)).

You can also choose to select the send connection from the list of all available connections for each call made from the base/handset.

► Open the **Settings** → **Telephony** → **Number Assignment** Web page.

The following is displayed for the **Desktop Phone** and every handset (example):

The screenshot shows a web interface for configuring connections. It is divided into two main sections: 'Desktop Phone' and 'Handsets'.

**Desktop Phone:**

- Internal Name: INT 1
- Connection Name: INT 1
- Connections and their status for outgoing and incoming calls:

Connection	for outgoing calls	for incoming calls
IP1	<input checked="" type="radio"/>	<input type="checkbox"/>
Gigaset.net	<input type="radio"/>	<input checked="" type="checkbox"/>
Fixed Line	<input type="radio"/>	<input checked="" type="checkbox"/>
GSM	<input type="radio"/>	<input checked="" type="checkbox"/>
Select line for each outgoing call	<input type="radio"/>	

**Handsets:**

- Internal Name: INT 2
- Connection Name: INT 2
- Connections and their status for outgoing and incoming calls:

Connection	for outgoing calls	for incoming calls
IP1	<input type="radio"/>	<input checked="" type="checkbox"/>
Gigaset.net	<input type="radio"/>	<input checked="" type="checkbox"/>
Fixed Line	<input checked="" type="radio"/>	<input checked="" type="checkbox"/>
GSM	<input type="radio"/>	<input checked="" type="checkbox"/>
Select line for each outgoing call	<input type="radio"/>	

The default name (**INT 1**, ... **INT 7**), any name you have set, and a list of connections that are configured and active for the phone are displayed for each handset and the base. The connection names are shown in the **Connection** column. The value **GSM** is displayed for the GSM connection. The GSM connection is only displayed if the list of known devices contains at least one GSM mobile phone.

- Change the internal name of the device in the **Name** field, if required.
- Define a connection as the send connection for each device. To do this, select the option (radio button) following the connection in the **for outgoing calls** column. The previous assignment will automatically be deactivated.

If you select the option **Select line for each outgoing call** instead, you can select which connection is used to establish a connection every time you make a call.

**Please note**

The Gigaset.net number is fixed as the send connection for the base and each registered handset. Numbers that end in #9 are automatically dialled via Gigaset.net.

- ▶ For each device, select the connections that are to be assigned to the handset as receive connections. To do so, click the option following the connection in the **for incoming calls** column. Every handset can be assigned several or no connections ( = assigned).
- ▶ Select **Set** to save your settings.

**Please note**

- ◆ If the connection assigned to a device as a send connection is deleted, the analogue fixed line network connection is automatically assigned to the device as a send connection.
- ◆ If a connection is not assigned to a device as a receive connection, calls to this phone number are signalled neither on the base nor any handset.

# Assigning receive/send connections to the FAX port

**Prerequisite:** You must have activated the fax connection on the base.

You can assign as many of your connections as you like to the FAX port as receive connections and one connection as a send connection. The device connected to the base via the FAX port is always assigned the internal name INT 8.

FAX-Port		
	for outgoing calls	for incoming calls
IP1	<input type="radio"/>	<input checked="" type="checkbox"/>
Gigaset.net		<input checked="" type="checkbox"/>
Fixed Line	<input checked="" type="radio"/>	<input checked="" type="checkbox"/>
GSM	<input type="radio"/>	<input checked="" type="checkbox"/>

- ▶ Click the option after the connection in the first column (**for outgoing calls**), which is to be assigned to the FAX port as a send connection. The previous assignment will automatically be deactivated.
- ▶ Click the option after the connection in the second column (**for incoming calls**), which is to be assigned to the FAX port as a receive connection. You can assign several connections or no connection ( = assigned).
- ▶ Select **Set** to save your settings.

### Please note

The settings are only effective if the FAX port on the base is activated ( → detailed user guide for the base available on the enclosed CD).



# Assigning receive connections to answering machines

For each of your connections, you can specify which of the three answering machines on the base shall receive incoming calls. Simply assign each receive connection to an answering machine.

### Please note

- ◆ Once the new entry is made, each connection is assigned to the integrated answering machine 1 as a receive connection.
- ◆ An answering machine is not activated if it is not assigned a receive connection. It is not shown in the answering machine list and you cannot activate it.

▶ Open the **Settings** → **Telephony** → **Number Assignment** Web page.

The name of the corresponding Bluetooth mobile telephone is displayed in the list of known devices for the GSM connection.

Answering machine	
Select the answering machine to store incoming calls for each connection.	
IP1	AM 1
Gigaset.net	AM 3
Fixed Line	AM 1

- ▶ In the **Answering Machine** area, for each connection (fixed line network, VoIP, GSM), select the answering machine (**AM 1**, **AM 2**, **AM 3**), that you want to receive calls for these connections (the answering machine must be activated). You can assign as many connections as you wish to the answering machine. If you select **None** for a connection, calls to this connection are not received by the answering machine.
- ▶ Select **Set** to save your settings.

# Activating the fixed line network connection as an alternative connection

You can activate the fixed line network connection as an alternative connection on your phone. If a call attempt fails via VoIP, an attempt is automatically made to establish a connection via the analogue fixed line network.

An alternative connection would be used in the following instances:

- ◆ Your VoIP connections are busy
  - ◆ The SIP server for the VoIP connection cannot be accessed
  - ◆ The dialled VoIP connection has not yet been configured or has not been configured correctly (e.g., incorrect password)
  - ◆ The base does not have a connection to the Internet, for example because your router is deactivated or not connected to the Internet.
- ▶ Open the **Settings** → **Telephony** → **Number Assignment** Web page.

### Alternative Connection Area:

- ▶ To activate the fixed line network connection as an alternative connection, click the option **Yes** next to **Automatic Fallback to Fixed Line**. Select **No** to deactivate the function.
- ▶ Then select **Set** to activate your settings.

# Telephony – Call Divert:

## Activating Call Divert for VoIP connections

---

You can forward calls to your VoIP connections and to your Gigaset.net number.

You can forward calls to your VoIP connections to any external number (VoIP, fixed line or mobile network number). The forwarding is done via VoIP.

You can forward calls to your Gigaset.net number within the Gigaset.net, i.e., to another Gigaset.net number.

For each of your VoIP connections (VoIP accounts), you can determine if and when calls to the corresponding VoIP number should be forwarded to a different VoIP phone number.

You can also use the base or a registered handset to set call forwarding and activate/deactivate it.

▶ Open the **Settings** → **Telephony** → **Call Divert** Web page.

The display shows a list of all your configured VoIP connections and your Gigaset.net number.

### Connections

Select the name you have assigned to the VoIP connection, or select **Gigaset.net**.

### When

Choose when you want an incoming call to be forwarded:

#### When busy

Calls are forwarded when the connection is occupied.

#### On no reply

Calls are diverted if no one accepts the call within several rings.

#### Always

Calls are diverted immediately, i.e. no more calls to this connection are signalled on your base.

#### Off

Deactivate call forwarding

### Call number

Enter the phone number to which the calls should be forwarded (maximum 32 characters, 0-9, \*, #, R (recall), P (pause)). Please note that you may have to enter the area code when forwarding to a fixed line network number in the same area (depending on your VoIP provider and the setting for the automatic area code → [page 42](#)).

The settings only affect the phone number selected in **Connections**.

▶ Select **Set** to save your settings.

### Please note

You can also use the base or a registered handset to set call forwarding for your fixed line connection, and to activate/deactivate it.

## Telephony – Dialling Plans: Entering an access code

---

If your base is connected to a PABX, you may have to enter an access code for external calls (external prefixes e.g., "0"). You can save this access code on the base.

- ▶ Open the **Settings → Telephony → Dialling Plans** Web page.

In the **Access Code** area:

- ▶ In the **Code for Fixed Line** fields, enter the access code to be dialled in front of phone numbers (maximum 3 figures) if you are calling via the fixed line network connection.
- ▶ Select from the **is added to numbers** list for fixed line network calls if the phone numbers should be prefixed by the access code.

### **Use for call lists**

The access code prefixes numbers dialled on the base or handset selected from a call list or an answering machine list.

### **Use always**

The access code prefixes all numbers dialled on the base or a handset.

### **Do not use**

The access code does not prefix any phone number before being dialled.

- ▶ In the **Code for VoIP line** field, enter the access code to be dialled in front of the phone numbers (maximum 3 figures) if you are calling via a VoIP connection.
- ▶ Select from the **is added to numbers** list for VoIP calls when the phone numbers should be prefixed by the access code. You can select from: **Use for call lists**, **Use always**, **Do not use** (see above for the respective meanings).
- ▶ Select **Set** to save the settings.

## Telephony – Dialling Plans: Entering your own area code and extra codes

---

On the base, save the complete code (with international code) for the area in which you are using the phone.

Please note the following for local calls:

- ◆ For local calls using your fixed line, you generally (depending on the exchange) do not have to dial an area code. All the calls in the call list are saved with area codes, for example. In order to be able to call a caller from the call list back, you have to save the local area code in the phone for the area your phone is in (Local area code). If your phone is in a "multiple area code" area, you also have to enter the other area codes for this area as **Extra area codes for PSTN connections**.
- ◆ You have to dial the area code for local calls using your VoIP connection. If you have saved your local area code in the phone and activated the **Predial long distance access code for VoIP calls** option, when numbers are dialled without a local area code, the local area code that has been entered is included automatically (e.g., when dialling from the directory).

- ▶ Open the **Settings** → **Telephony** → **Dialling Plans** Web page.

In the **Area Codes** area:

- ▶ From the **Country** list, select the country in which you are using your phone. Then, the international prefix (**International Prefix** and **Area Code**) and the prefix of the area code (**Local Prefix Area Code**) are set automatically.
- ▶ In the **Local Area Code** field, enter the area code for your town without a prefix (maximum 8 figures 0–9, \*, #, F (flash), P (pause)).

### **Activating/deactivating area code pre-dialling**

- ▶ Select **Yes** behind **Predial long distance access code for VoIP calls** to activate area code pre-dialling.

Select **No** to deactivate the function. You will then need to enter the area code for local calls made via VoIP. Numbers in the directory must always contain the area code when dialling via VoIP.

#### **Please note**

- ◆ The area code will also be prefixed to VoIP calls made to emergency numbers if there are **no** defined dialling plans for these numbers.
- ◆ The numbers of your network mailbox saved in the base are **not** prefixed with a code ( → [page 47](#)).

### **Extra area codes for PSTN connections**

- ▶ Enter the extra codes of your area in the fields **Entry No. 1** up to **Entry No. 5**. Maximum 3 characters, digits and the characters "\*", "#" are permitted for each extra code.

### **Save settings**

- ▶ Click on **Set** to save your settings.

# Telephony – Dialling Plans:

## Defining dialling plans – cost control

---

You can define dialling plans to reduce costs:

- ◆ You can define a specific connection (fixed line network connection or a VoIP connection) for specific phone numbers via which these phone numbers are dialled, and which are used for billing.

If you enter just a few digits (e.g., local area, national or mobile network code) any call to a number beginning with these digits will be made via the selected connection.

- ◆ You can block specific phone numbers, i.e. your phone will not establish a connection to these phone numbers (e.g. 09 numbers).

The dialling plans apply to the base and all registered handsets. The send connection settings are inactive when dialling numbers that are governed by a dialling plan.

### Please note

With the exception of blocks, dialling plans are inactive in the following case:

- ▶ You assign the select line to a function key on the base (see the detailed user manual for the base), and explicitly select a send connection from the list of available connections before dialling.

### Tips:

- ◆ Compare the rates for long-distance calls (especially for international calls) offered by your fixed line network and VoIP providers, and determine which connection should be used specifically for these countries/locations, e.g., a dialling plan for the **Phone Number** "0033" would apply to every call made to France.
- ◆ Use dialling plans to define that numbers starting with a call-by-call number are always made via your fixed line network connection. To do so, enter the call-by-call number in the **Phone Number** field.

# Defining dialling plans

- ▶ Open the **Settings** → **Telephony** → **Dialling Plans** Web page.

## Dialling Plans area

Specify dialling plans for your phone. Under **New Rule**, enter the following:

### Phone Number

Enter the number or the first digits of the phone number (e.g., an area code) to which the dialling plan should apply (max. 15 digits).

### Use Area Codes

Select the option in the **Use Area Codes** column to precede the corresponding number(s) for all calls via VoIP with the local area code, that you have specified in the **Area Codes** area .

### Connection

The list shows all the connections that you have configured for the telephone. It also displays the name assigned to each connection.

- ▶ From the list, select the connection via which the number or numbers that start with the specified sequence of digits should be dialled. Disabled connections are greyed out.

Or:

- ▶ Select **Block** from the list if the number or numbers that starts with the the specified sequence of digits should be blocked. The display will show **Not possible**.

### Comment (optional)

You can enter a description of the dialling plan here (maximum of 20 characters).

- ▶ Select **Add**.

The dialling plan is activated immediately.

A new empty line for a new dialling plan will appear if your phone still has enough space to add further plans.

### Please note

If dialling plans overlap, the one with the greatest concordance will apply.

#### Example:

There is a dialling plan for the number "02" and one for the number "023". If you dial "0231..." the second plan will apply; if you dial "0208..." the first plan will apply.

### Examples

All calls to the mobile phone network should be made via your VoIP connection with provider B.

Dialling plans:

**Phone Number** = 017 **Connection** = IP3, provider B

and the corresponding entries for "015" and "016".

## Emergency numbers

Dialling plans for emergency numbers (e.g., the **local** police emergency number) are preset for certain countries. The fixed line network is determined as the **Connection**.

You should only change these dialling plans if the telephone is not connected to the fixed line network connection. If you choose a VoIP connection in **Connection** please make sure the VoIP provider supports calls to emergency numbers. If the VoIP connection is deleted from the configuration, the emergency call can no longer be made.

If no emergency numbers are set by default, you should define dialling plans for emergency numbers yourself and assign them to a connection of which you know that it supports emergency calls.

## Activating/deactivating dialling plans

- ▶ Select the option in the **Active** column to activate/deactivate the corresponding dialling plan ( = activated).

A deactivated dialling plan will not take effect until it is reactivated.

## Deleting dialling plans

- ▶ Select **Delete** after the dialling plan you wish to delete.

The dialling plan is deleted from the list immediately. The space in the list is released.



# Telephony – Network Mailboxes:

## Entering the network mailbox, activating/deactivating the network mailbox

---

Many fixed network, and VoIP providers offer answering machines on the network – these are known as network mailboxes.

Each network mailbox accepts incoming calls made via the corresponding line (fixed line network or corresponding VoIP connection). To record all calls, set up network mailboxes for the fixed line network and for each of your VoIP connections.

By saving the network mailbox numbers on the base, you can assign a network mailbox to key 1 for fast dialling or call each network mailbox directly by opening the message list.

You can enter the number of the relevant network mailbox for each configured connection via the Web configurator. You can activate/deactivate the network mailboxes for your VoIP connections using the Web configurator.

- ▶ Open the **Settings** → **Telephony** → **Network Mailboxes** Web page.

A list with all possible connections is displayed on the Web page. The names of the connections are displayed in the **Connection** column.

### Entering numbers

- ▶ Enter the network mailbox number in the **Call number** column after the desired connection.

With some VoIP providers your mailbox number is downloaded together with the general VoIP provider data ( → [page 24](#)), saved to your base and displayed under **Call number**.

- ▶ Select **Set** to save your settings.

### Activating/deactivating the network mailbox

- ▶ You can activate () and deactivate () individual network mailboxes using the option in the **Active** column. Activating/deactivating is carried out by selecting the appropriate option. The change does not need to be saved.

#### Please note

You need to have **requested** the network mailbox for your fixed line network connection from your fixed line network provider.

For instructions on activating/deactivating the network mailbox for the fixed line network connection, please refer to the fixed line network provider's information.

# Telephony – Advanced Settings:

## Setting DTMF signalling for VoIP

---

DTMF signalling is required, for example, for querying and controlling certain network mailboxes via digit codes or for remote operation of the local answering machine.

To send DTMF signals via VoIP you must first define how key codes should be converted into and sent as DTMF signals: as audible information via the speech channel or as a "SIP Info" message.

Ask your VoIP provider which type of DTMF transmission it supports.

- ▶ Open the **Settings** → **Telephony** → **Advanced Settings** Web page.

### DTMF over VoIP connections area

Make the required settings for sending DTMF signals.

You have the following options:

- ▶ You can activate the **Automatic** option. All other options for the **Send settings** are deactivated. For each call, the base attempts to set the suitable DTMF signalling type for the current codec.
- ▶ You can deactivate the **Automatic** option and explicitly define the type of DTMF signalling:
  - ▶ Activate **Audio** or **RFC 2833** if DTMF signals are to be transmitted acoustically (in voice packets).
  - ▶ Activate **SIP Info** if DTMF signals are to be transmitted as code.
- ▶ Select **Set** to save your settings.

#### Please note

- ◆ The settings for DTMF signalling apply to all VoIP connections (VoIP accounts).
- ◆ DTMF signals cannot be transmitted in the audio path (**Audio**) on broadband connections (the G.722 codec is used).

# Telephony – Advanced Settings:

## Defining recall functions for VoIP (hook recall)

---

Your VoIP provider may support special performance features. To make use of these features, your phone needs to send a specific signal (datapacket) to the SIP server. You can assign this "signal" as an R function to a function key or a display key on your phone.

If you press this key during a VoIP call, the signal is sent.

### Requirement:

- ◆ DTMF reminders via SIP info messages are activated, i.e., the **SIP Info** option on this web page is activated ( → [page 48](#)).
- ◆ The R function is not used for call transfer, i.e., **Use the R key to initiate call transfer with the SIP Refer method = No** is set for call transfer ( → [page 50](#)).

If one of these prerequisites is not fulfilled, the fields in the **Hook Flash (R-key)** area are hidden.

- ▶ Open the **Settings** → **Telephony** → **Advanced Settings** Web page.

### Hook Flash (R-key) area

- ▶ In the **Application Type** (maximum 31 characters) and **Application signal** fields (maximum 15 characters), enter the data that you have received from your VoIP provider.
- ▶ Select **Set** to save your settings.

The setting for the R function applies both to the base and all registered handsets.

# Telephony – Advanced Settings:

## Configuring call transfer via VoIP

---

You can connect an external call to one of your VoIP connections with an external connection (depending on the provider) by setting up an external consultation call. You can configure settings for this type of call transfer.

- ▶ Open the **Settings → Telephony → Advanced Settings** Web page.

### Call Transfer area

- ▶ Configure your settings for call forwarding via VoIP in the following fields:

#### Use the R key to initiate call transfer with the SIP Refer method

If you choose **Yes**, you can connect the two external callers with each other via the R function. You can assign the R function to a function key or display key on your phone.

Your connections with the parties are terminated.

#### Transfer Call by On-Hook

If you select **Yes**, the external parties are connected when you replace the handset. Your connections with the parties are terminated.

#### Derive target address

Define the protocol (the contents of the "Refer To" information) to which precedence should be given for call transfer in order to determine the destination address:

##### from the SIP URL

This protocol is recommended when the base is connected to the Internet via a router with NAT.

##### from the SIP contact header

This protocol is recommended for "closed" networks (internal company and business networks).

#### Determine target address automatically

If you select **Yes**, the base will automatically attempt to determine the best protocol.

If the base cannot determine the best protocol, it will use the protocol defined in **Derive target address**.

#### Hold on transfer target

Define the type of call transfer:

- ▶ If you select **For attended transfer**, the first call on the VoIP connection of your phone must be held until the consultation call is accepted. Only then can the two callers be connected with each other.
  - ▶ If you select **For unattended transfer**, the caller must only be held waiting until you have started the consultation call (dialled the number). You can forward the call before the two participants have registered.
- ▶ Select **Set** to save your settings.

# Telephony – Advanced Settings:

## Defining local communication ports for VoIP

---

Specify which local communication ports (port numbers) the phone is to use for VoIP telephony. The ports must not be used by any other subscriber in the LAN.

The following communication ports are used for VoIP telephony:

◆ **SIP port**

Communication port via which the phone receives (SIP) signalling data

◆ **RTP port**

Two consecutive RTP ports (consecutive port numbers) are required for each VoIP connection. Voice data is received via one port and control data via the other.

You can set port numbers or port number areas for SIP and RTP ports, or set your phone to use any number of free ports from a predefined range of port numbers.

▶ Open the **Settings → Telephony → Advanced Settings** Web page.

### Listen ports for VoIP connections area

#### Use random ports

Click **No** if you want the phone to use the ports specified in the **SIP port** and **RTP port** fields.

Select **Yes**, if you do not want the phone to use fixed ports for **SIP port** and **RTP port**, but rather to use any free ports from predefined ranges of port numbers.

The use of random ports makes sense if you want multiple phones to be operated on the same router with NAT. The phones must then use different ports so that the router's NAT is only able to forward incoming calls and voice data to one (the intended) phone.

#### Use random ports = No

##### SIP port

Specify the port number for the SIP port. Enter a number between 1024 and 49152 in the field.

The default port number for SIP signalling is 5060.

The port number specified must not be in the **RTP port** number range.

### **RTP port**

Specify a range of port numbers that are to be used as RTP ports. This range must be reserved in the LAN (router) for the phone.

Enter the lowest port number in the left-hand field and the highest number in the right-hand field (numbers between 1024 and 55000).

#### **Size of the port number range:**

The difference between the port numbers must be at least **6** if you permit two simultaneous VoIP calls on your phone. The difference must be at least **4** if you only permit one VoIP call ( → option **Allow 1 VoIP call only** on [page 31](#)).

The lower of the port numbers in the range (in the left-hand field) must be an **even** number. If you enter an odd number, the next lowest even number is selected automatically (e.g., if you enter 5003, then 5002 is set automatically).

The default range is 5004 to 5020.

### **Use random ports = Yes**

#### **SIP port**

Enter the port number range from which the SIP port is to be dialled.

Enter the lowest port number in the port number range in the left-hand field and the highest number in the right-hand field (numbers between 1024 and 49152).

This port number range must not overlap with the range specified for **RTP port**.

The default range is 5060 to 5076.

#### **RTP port**

Specify a range of port numbers from which the RTP port is to be dialled.

Enter the lowest port number in the port number range in the left-hand field and the highest number in the right-hand field.

The default range is 5004 to 5020.

- ▶ Select **Set** to save your settings.

# E-Mail:

## Making e-mail settings

---

You can use your phone to be notified about new e-mail messages on your incoming e-mail server and to display the incoming e-mail list and the text of the messages on the handset.

You must store the address or DNS name of your incoming e-mail server and your personal access data in the phone and activate the e-mail check with the incoming e-mail server, so that the phone can establish a connection to the incoming e-mail server and connect to your mailbox.

- ▶ Open the **Settings** → **E-Mail** Web page.
- ▶ Enter the user name (account name) agreed with the Internet provider (max. 74 characters) in the **Authentication name** field.
- ▶ Enter the password agreed with the provider for accessing the incoming e-mail server (max. 32 characters; case sensitive) in the **Authentication password** field. When entering a new password the characters are visible. Existing passwords are represented by 8 asterisks.
- ▶ Enter the name of the incoming e-mail server (POP3 server) (max. 74 characters) in the **POP3 Server** field. Example: pop.theserver.com.
- ▶ In the **POP3 Server port** field enter the communication port used on the POP3/POP3S server (number between 1 and 55,000; maximum 5 digits). The default setting is port 110. Enabling the **Secure Connection (SSL)** function automatically changes the port number to 995.
- ▶ Indicate whether the phone should be authenticated with the POP3S server via a secure connection (POP3S via SSL/TLS).
  - ▶ Select **Secure Connection (SSL)** = **Yes** to enable the encryption. A prerequisite for successfully establishing a connection to the POP3S server is that a server and a client certificate have been saved on the base station. Enabling this function overwrites the existing port number in **POP3 Server port** with 995.
  - ▶ Clicking on **No** transfers the access data without encryption.
- ▶ From the **Check for new e-mail** list select the time interval at which your phone should check if new messages have arrived in your incoming e-mail server. Select **Never** to deactivate the prompt. Select one of the other values to activate the prompt for new e-mail messages.
- ▶ Select the **Set** button to save the settings in your phone.

# Services – Info Services:

## Configuring/activating the display

---

You can configure your base to display customised text information (e.g., weather reports, news feeds, eBay messages, traffic reports) in the idle display. To do so, you must set the **Info Services** screensaver on the base.

### Configuring info services

#### Please note

The default setting is the weather report. It is shown in the base's idle display as soon as you set **Info Services** as a screensaver.

- ▶ Open the **Settings** → **Info Services** Web page.
- ▶ Click the link

[www.gigaset.net/myaccount](http://www.gigaset.net/myaccount)

The Web page for Gigaset.net info services is opened. You are already registered with your Gigaset.net user ID. Your Gigaset.net user ID and your password are displayed on the **Services** page of the Web configurator.

This opens a Web page where you can compile your info service.

- ▶ Define which information should be sent regularly to your base and connected handsets.

If text information is available and **Info Services** is set as the screensaver, the information appears in the idle display of the base and all registered Gigaset SL78H, SL400H or S79H handsets.

If no text information is available, the digital clock will appear in the idle display instead.



# Services – Online Directory:

## Selecting an online directory

---

You can use online phone directories (public directory, classified directory and/or your private net directory) on the base and registered handsets. You can use your telephone's Web configurator to define which online directory you wish to use.

You can also elect to display the name under which the caller making an incoming call is saved in the online directory (**Display of caller's name**) – in the call display on the base and in the call list.

**Prerequisite:** This function is supported by the provider of the online directory.

- ▶ Open the Web page **Settings** → **Online Directory**.
- ▶ Select the provider whose online directory you wish to use from the **Provider** list. Select **none** if you do not wish to use an online directory.


The following fields are displayed depending on the **Provider** you select:

### Entering Authentication password and Authentication name

These fields are displayed if you need to register with the provider to gain access to certain services:

- ◆ Some providers require you to register every time you want to access their online directory. They require registration with authentication name and password for access to the online directory. You must store this data on the base.
- ◆ Other providers differentiate between standard and premium services. You can access standard services **without** entering an authentication name and password. But you will have to register to use the premium services. You will need to save the access data in your base to gain access to premium services.
- ▶ Enter the data received from the provider in the **Authentication name** (max. 74 characters) and **Authentication password** (max. 20 characters) fields.
- ▶ Click the **Set** button to save the settings in your phone.

#### Please note

- ◆ Instructions on using online directories on the base are included in the detailed user guide for the phone.
- ◆ In the list of online directories (press  **and hold**), the provider-specific names of the online directories are displayed.
- ◆ If you select **none** from the **Provider** list, the entries for online and classified directories are not displayed in the list of online directories on the base or handsets.

# Directory Transfer:

## Deleting directories and loading to/from the PC.

---

The Web configurator provides the following options for editing the directories of the base and registered handsets.

- ◆ Store the directories on a PC. Entries are stored in vCard format in a vcf file on the PC. You can edit these files with an ASCII editor (e.g., Notepad/Editor in Windows Accessories) and load them onto the base or any registered handset. You can also copy directory entries to your PC directory.
- ◆ Copy contact details from your PC directory to directories on the base and handsets. Export the contacts in vcf files (vCards) and transfer them to directories for the base and handsets using the Web configurator.
- ◆ Delete the directory on the base/handset.

If you have edited the directory file (vcf file) on the PC and would like to load this modified directory to the base/handset, you can delete the current directory on the base/handset before the transfer.

**Tip:** Back up the current directory on your PC before deleting it. You can then reload it if the modified directory is affected by formatting errors and some, or all, of it cannot be loaded onto the base/handset.

### Please note

- ◆ You can find information on vCard format (vcf) on the Internet e.g., at: [www.en.wikipedia.org/wiki/VCard](http://www.en.wikipedia.org/wiki/VCard) (English) or [www.de.wikipedia.org/wiki/VCard](http://www.de.wikipedia.org/wiki/VCard) (German)  
(You can set the display language at the bottom left-hand side in the navigation area of the Web page.)
- ◆ If you wish to copy a directory (vcf file) with multiple entries stored on the PC to the Microsoft Outlook™ directory, please proceed as follows:  
Microsoft Outlook™ only ever transfers the first (directory) entry from the vcf file to its directory.  
You can use the **Gigaset QuickSync** program (included with the phone) to compare the directory on the base with the Outlook directory. You will find it on the enclosed CD.

### Prerequisites:

- ◆ The base can send and receive directory entries.
- ◆ The handset is activated and is in idle status.
- ▶ Open the **Settings** → **Directory Transfer** Web page.

In the **Export and import directories** area, the base (**Desktop Phone**) and the names of all registered handsets are shown (**Handset** section).

- ▶ Select the base or handset for which you want to save or edit the directory. To do this, click the option in front of the base/handset.

## Loading the directory file from the PC to the base/handset

In the "**Import directory from PC**" area:

- ▶ In the **Name of directory** field, enter the vcf file you want to load onto the device (complete path name), or click **Browse...** and navigate your way to the file.
- ▶ Click on the **Transfer** button to start the transfer.

The display will show how many of the entries from the vcf file are being transferred to the directory.

### Transfer rules

The directory entries from a vcf file that are loaded onto the base/handset are added to the directory. If an entry already exists for a name, it will either be supplemented or a new entry for the name is created. The process will not overwrite or delete any phone numbers.

#### Please note

Depending on your device type, up to 3 entries with the same name are created in the directory for each vCard – one entry per entered number.

## Loading the directory from the base/handset to the PC

- ▶ Select **Save** in the **Save directory on PC** area. A browser dialogue box appears where you can open/save the file.

## Deleting the directory

- ▶ Select **Delete** in the **Delete directory** area.
- ▶ Confirm the **Telephone directory of the selected handset will be deleted. Continue?** security prompt with **OK**.

All directory entries are deleted.

## Understanding directory file content (vcf file)

The following data (if available) is written into the vcf file for entry into the directory or transferred from a vcf file into the handset directory.

- ◆ Name
- ◆ First name
- ◆ Number
- ◆ Number (office)
- ◆ Number (mobile)
- ◆ E-mail address
- ◆ Birthday (YYYY-MM-DD) and time of the reminder call (HH:MM) separated by a "T" (example: 2008-12-24T11:00).

Other information that a vCard may contain is not entered into the base/handset directory.

### Example of an entry in vCard format:

```
BEGIN:VCARD
VERSION:2.1
N:Smith;Anna
TEL;HOME:1234567890
TEL;WORK:0299123456
TEL;CELL:0175987654321
E-MAIL:anna@smith.com
BDAY:2008-12-24T11:00
END:VCARD
```

# Management – Date & Time:

## Copying the date/time from the time server

---

The date and time are shown in the idle display of the base and registered handsets. They are important, for example, for stating the correct time in the answering machine list, call lists and for the "anniversary", "appointments" and "alarm clock" functions.

There are various ways to update the date and time:

- ◆ Manually on the base or on one of the registered handsets
- ◆ Automatically through synchronisation with a time server on the Internet

Activate/deactivate synchronisation with a time server as follows:

- ▶ Open the **Settings** → **Management** → **Date & Time** Web page.
- ▶ In the **Automatic adjustment of System Time with Time Server** field, select **Yes** to activate synchronisation between the base and a time server. If you select **No** the base will not adopt time settings from a time server. In this case, set the time and date manually using a handset.
- ▶ The **Last synchronisation with time server** field indicates the last time the base compared the time and date settings with a time server. The field is only shown if synchronisation is enabled.
- ▶ In the **Time Server** field, enter the Internet address or DNS name of the time server from which the base should adopt its time and date settings (maximum 74 characters). The time server "europe.pool.ntp.org" is set as default. You can overwrite the setting.
- ▶ From the **Country** list, select the country in which you are using your phone.
- ▶ The **Time Zone** field shows a list of all valid time zones for the country. The deviation between local time (not summer time) and Greenwich Mean Time (GMT) is shown. Select the valid time zone dependent on the area in which you want to use your phone.  
If a country is not divided into various time zones, the valid time zone is displayed in the **Time Zone** field.
- ▶ The **Automatically adjust clock to summer-time changes** field is displayed if your time zone differentiates between British summer time and standard time. Select **Yes** if you want the time to change automatically to summer time or standard time when British summer time begins and ends respectively. Select **No** if you do not want to change to summer time.  
**Please note:** If the date and time are updated by a time server that automatically switches between summer time and standard time, you must always select **No** here.
- ▶ Select the **Set** button to save the settings in your phone.

Once you have activated synchronisation, the time and date are compared with a time server as soon as an Internet connection is established.

Synchronisation will usually occur once a day (at night) if synchronisation is activated. Any additional synchronisation will take place only after each system start of the base (e.g., after a firmware update or a power cut).

If you register a new handset on your base, it will assume the time and date of the base without any additional synchronisation with the time server.

Date and time settings are transferred to every registered handset after synchronisation.

#### **Please note**

- ◆ The default time server "europe.pool.ntp.org" will remain stored on the base even if you overwrite it. If you delete your time server from the **Time Server** field and synchronisation is still activated, the base will continue to synchronise with the default time server. However, it will no longer appear in the **Time Server** field.
- ◆ If you have entered your own time server in the **Time Server** field, and the base is unable to synchronise for ten consecutive attempts, the base will synchronise with the default time server on the next synchronisation.

## Management – Miscellaneous: Resregistering handsets

---

You can register up to six handsets with your phone. The registration must be initiated on the phone and the handset.

- ▶ Open the **Settings** → **Management** → **Miscellaneous** Web page.
- ▶ Click on the **Start Registration** button to enable registration mode on the phone. Registration mode remains active for around 60 seconds.

You are prompted to start the registration on the handset.

- ▶ Start the registration on the handset within 60 seconds as described in the handset user manual.

Once registration is complete, the handset returns to idle status. The display shows the internal number for the handset, e.g., INT2. The handset is on the list of registered handsets on the **Status** tab.

## Management – Miscellaneous: Reducing radiation – activating/deactivating Eco Mode

---

The radiation from the registered handsets reduces **automatically** depending on their distance to the base. The closer the handsets are to the base, the lower the radiation.

### **Eco Mode - Further reducing radiation**

You can further reduce the radiation from the handsets and base by using **Eco Mode**.

**Eco Mode** reduces radiation by 80% – whether you are making a call or not.

**Eco Mode** reduces the range of the base by approx. 50%. Using **Eco Mode** always makes sense when a reduced range is sufficient.

### **Activating/deactivating Eco Mode**

- ▶ Open the **Settings** → **Management** → **Miscellaneous** Web page.
- ▶ Enable/disable **Eco Mode** to activate/deactivate Eco Mode.
- ▶ Select **Set** to save the changes.

#### **Please note**

Activating **Eco Mode** reduces the range of the base.

## Management – Miscellaneous: Changing system PIN of the phone

---

Protect the system settings of your phone with a 4-digit PIN known only to you. You are then prompted to enter the system PIN before changing important system settings and when logging into the Web configurator.

The default setting for the PIN is **0000**.

- ▶ Open the **Settings → Management → Miscellaneous** Web page.
- ▶ Enter a new 4-digit system PIN for the base station in the **New PIN** field (four digits from 0 to 9).
- ▶ The new PIN is enabled when you click on the **Set** button.

## Management – Miscellaneous: Activating VoIP status message display

---

You can display VoIP status messages on your handset when there are VoIP connection problems. These messages give you information on the status of a connection and contain a provider-specific status code that helps the service team when they are analysing the problem.

A table with possible status codes and their meaning can be found in the phone's detailed user manual on the enclosed CD,

- ▶ Open the **Settings → Management → Miscellaneous** Web page.
- ▶ Click on the **Yes / No** option next to **Show VoIP status on handset** to enable or disable the message display.
- ▶ Select **Set** to save the changes.



# Management – Save & Restore:

## Saving and restoring system settings

---

After configuring your base, you can save the current settings in a file on your PC. The file will then contain, for example:

- ◆ The settings for the local network (IP configuration), → [page 14](#)
- ◆ The active phone numbers/connections, → [page 18](#)
- ◆ The assignment of send and receive connections, → [page 35](#)
- ◆ Your own local area code and access code, → [page 42](#)
- ◆ Network mailbox number, → [page 47](#)
- ◆ The info services settings, → [page 54](#)
- ◆ The settings for synchronisation with a time server, → [page 59](#)
- ◆ The ECO DECT settings, → [page 61](#)
- ◆ The settings for ringer melodies and volume levels

If you change the settings accidentally or you need to reset the base due to a fault, you can reload the saved settings from the file on your PC to your phone.

- ▶ Open the **Settings** → **Management** → **Save & Restore** Web page.

## Saving the settings for the base on your PC

In the **Save device settings to PC** area:

- ▶ Click the **Save** button next to **Save settings**.  
The base will create a file Gigaset-yyyy-mm-dd.cfg (default name; yyyy = year 4-digit format, mm = month 2-digit, dd = day 2-digit) with the configuration data.
- ▶ A browser-specific dialogue box appears where you can open/save the file. Change the name, if necessary, and save the file on your PC.

## Loading the settings from a file on the PC to the base

**Prerequisite:** There is a .cfg file with the settings for the base on your PC.

In the **Reload device settings from PC** area:

- ▶ In the **Settings File** field, enter the cfg file you want to load onto the base (complete path name), or click **Browse...** and navigate your way to the file.
- ▶ Select **Restore** button to start the transfer.

# Management – Firmware Update:

## Updating the base's firmware

---

If necessary, you can load updates of the base firmware onto your base.

The server on which new firmware versions are generally available to download to your base is set by default. The URL of the Internet server is displayed in the **Data server** field.

### Please note

- ◆ You should only change this URL under exceptional circumstances (e.g., if requested to do so due to a malfunction). This address is also used to load VoIP provider information from the Internet. You should therefore make a note of the default URL before you overwrite it. Otherwise, you will only be able to reactivate the default URL by resetting the base back to the default settings.
- ◆ When updating from the Internet, checks are made to ensure that no **new** version of the firmware exists. If this is not the case, the operation is terminated. You will receive a message to this effect.
- ◆ The firmware is only loaded from the Internet if you have not entered a local file in the **User defined firmware file** field prior to the update.

## Starting the firmware update manually

### Prerequisites:

- ◆ The base has a connection to the Internet.
- ◆ No calls are being made via the fixed line network or VoIP.
- ◆ There is no internal connection between the base and registered handsets.
- ◆ No handset has the base menu open.
- ▶ Open the **Settings** → **Management** → **Firmware Update** Web page.
- ▶ Select the **Update Firmware** button.

If a newer firmware version is available, this is loaded to the base. Your connection to the Web configurator is terminated, and the base is rebooted.

This process can take up to 3 minutes.

### Please note

In exceptional circumstances you may receive, for example, a firmware file from Service that you can upload from the local PC to your telephone (e.g., because the firmware update via the Internet did not work). Check the prerequisites for your PC.

- ▶ First download the firmware file to your PC, and in the **User defined firmware file** field, enter the IP address of the PC in your local network and the full path and name of the firmware file on the PC (max. 74 characters).
- ▶ Now click the **Set** button, and then the **Update Firmware** button to start the update.

The information in the **User defined firmware file** field is only used during **this** (following) firmware update.

If an error arises during a firmware update from a local PC, the new version of the firmware is automatically downloaded from the Internet.

## Downgrading the firmware - reload a previously downloaded firmware version on the phone

- ▶ Open the **Settings** → **Management** → **Firmware Update** Web page.

You have the following options:

- ◆ You can reload the firmware version that was loaded before the last update on the phone.
  - ▶ Select the **Downgrade Firmware** button. The text above this button shows the version of the firmware that you want to reload
  - ▶ In the following dialog box, click the **OK** button to confirm the prompt.

The firmware is reloaded to the phone. The new firmware is overwritten. Your connection to the Web configurator is terminated, and the base is rebooted.

This process can take up to 3 minutes.

## Activating/deactivating the automatic version check

When the version check is activated, the phone checks on a daily basis whether the Gigaset configuration server has a new version of the phone firmware or the provider profile (general provider data).

If a new version is available, a notification is sent to the base and the corresponding message flashes. You can then perform an automatic update of the firmware or of the provider data. Please refer to the user guide for the base.

- ▶ Open the **Settings** → **Management** → **Firmware Update** Web page.
- ▶ Select **Yes** next to **Automatic check for software/profile updates** to activate the automatic version check.  
Select **No** if you do not want a version check to be carried out.
- ▶ Select **Set** to save the changes.

### **Please note**

If the telephone is not connected to the Internet at the time when the check for new versions is to be carried out (e.g., because the router is deactivated), the check is carried out as soon as the phone is reconnected to the Internet.

# Querying the phone status

---

General information about your phone is displayed.

▶ In the menu list, select the **Status** tab.

The following information is displayed:

## IP Configuration area

### IP address

The phone's current IP address within the local network. For details on assigning the IP address, → [page 14](#).

### MAC address

The phone's device address.

### Device Name in the Network

The name of the phone within the local network ( → [page 15](#)).

## Software area

### Firmware version

Version of the firmware currently loaded on the phone. You can download updates of the firmware to your phone. Firmware updates are available on the Internet.

The version number is displayed in the following format: Vxx.xx-yy.yy.yy.

xx.xx denotes the phone's product variant

yy.yy.yy denotes the version of firmware (the first two digits) and the sub-version.

The edition V41.00-30/01/00 means that firmware version 30 is currently loaded on your base.

## Fixed Line area

This information is only displayed if your phone is connected to the analogue fixed line network.

The name that you have defined for your fixed line network connection or the default name **Fixed Line** is displayed.

## VoIP Status area

A list of all the VoIP connections you have configured for your phone is displayed. The following are shown in the list:

### Name

Name that you have specified for the VoIP connection or your default name **IP1, IP2 ... IP6**.

### Status

**Registered**

The connection is activated. The phone has been successfully registered. You can use the connection to make calls.

**Disabled**

The connection is deactivated. The phone is not registering with the corresponding account with the VoIP service. You cannot use the connection to make or receive calls.

**Registration failed / Server not accessible**

Your phone was unable to register with the VoIP service, e.g., because the VoIP access data is incorrect or incomplete or the phone is not connected to the Internet.

## Gigaset.net area

The status of the Gigaset.net connection is displayed:

**Status**

**Registered**

The connection is activated. The phone has successfully registered in Gigaset.net. You can use the connection to make calls via Gigaset.net.

**Disabled**

The connection is deactivated. The phone does not register with the Gigaset.net phone service. You cannot use the connection to make or receive calls via Gigaset.net.

**Registration failed / Server not accessible**

The phone was not able to register with Gigaset.net, for example, because the telephone does not have a connection to the Internet.

## GSM Connections area

The mobile telephones registered via the Bluetooth interface of the base are listed:

### **Name**

The Bluetooth name under which the mobile phone is entered in the list of "known devices" on the base.

### **Status**

#### **Registered**

The mobile phone is registered to the base, i.e. it appears in the **Known Devices** list. However, the mobile phone is not yet activated. The **Connect Cell Phone** option is **not** set for this mobile phone.

#### **Connected**

The mobile phone is displayed in the **Known Devices** list and is active. The **Connect Cell Phone** option is set for this mobile phone.

Further information about the Bluetooth interface of the base and the connected devices can be found in the long user guide for the phone on the CD.

## Registered Handsets area

All handsets registered on the base are listed. The internal names for the handsets are displayed. If you have not assigned a name to a handset, then the default name **INT 2, INT 3 ....** is shown.

## Date and Time area

### **Time**

Time currently set on the base.

### **Date**

Date currently set on the base.

### **Last Synchronisation**

If synchronisation to a time server is activated ( → [page 59](#)), the time when the last synchronisation procedure occurred is shown here.

# Index

---

## A

- Access code
  - entering..... 42
- Access to Web configurator services
  - from other networks ..... 15
- Account name (e-mail) ..... 53
- Activate annex B for G.729 ..... 34
- Activating the network mailbox ..... 47
- Adapter plug
  - power saving ..... 61
- Address assignment (IP address)..... 14
- Alternate DNS server ..... 15
- Answering machine
  - assigning receive connections ..... 39
- Application signal (R key) ..... 49
- Application type (R key) ..... 49
- Audio (DTMF signalling) ..... 48
- Auto configuration code ..... 23
- Automatic configuration
  - VoIP connection ..... 23
- Automatic version check..... 66
- Available codecs ..... 33

## B

- Base
  - assigning receive connection ..... 36
  - assigning send connection..... 36
- Base firmware
  - updating ..... 64
- Broadband voice codec..... 31

## C

- Call divert
  - Gigaset.net ..... 41
- Call forwarding
  - VoIP..... 41
- Changing to summer time ..... 59
- Checkboxes ..... 11
- Codecs, available..... 33
- Configuration
  - VoIP connection (automatic) ..... 23
- Connecting
  - to internal company network ..... 16
- Connecting the PC to the Web configurator.....6
- Connection
  - activating (VoIP) ..... 29

- Phone to LAN..... 14
- status ..... 20
- to Gigaset.net ..... 22, 30
- Connection name
  - VoIP ..... 23
- Connection name (Gigaset.net)..... 22, 30
- Connection name (MSN)..... 30
- Cost control
  - defining dialling plans..... 44

## D

- Data server for firmware update ..... 64
- Date
  - transferring from time server..... 59
- Deactivating
  - network mailbox..... 47
- Deregistering
  - from Web configurator .....9
- Device management
  - date and time..... 59
  - firmware update ..... 64
  - miscellaneous ..... 61, 62
  - save & restore..... 63
- Dialling Plans ..... 44
- Dialling plans
  - activating/deactivating..... 46
  - defining..... 45
  - deleting..... 46
  - for emergency numbers ..... 46
- Directory
  - deleting..... 57
  - loading from PC ..... 57
  - transferring to/from PC..... 56
- Directory file
  - content (vCard format) ..... 58
- Directory transfer ..... 56
- Displayed name (VoIP)..... 26
- DNS server
  - alternate ..... 15
  - preferred..... 15
- Domain ..... 26
- DTMF-reminder for VoIP ..... 48
- Dynamic IP address ..... 14

## E

- Eco Mode ..... 61
  - activating/deactivating..... 61
- Eco Mode+
  - activating/deactivating..... 61
- E-mail



account name .....	53
entering access data .....	53
incoming e-mail server .....	53
registration name/password .....	53
settings .....	53
Emergency numbers	
dialling plans for .....	46
Entering access data (e-mail) .....	53
Entering Cyrillic/Arabic characters .....	12

## F

FAX connection	
assigning connections .....	38
Firmware	
automatic update .....	66
checking version .....	67
starting update .....	64

## G

G.711 $\mu$ law .....	31
G.711 a law .....	31
G.722 .....	31
G.722 broadband language codec .....	31
G.726 .....	31
G.729 .....	31
Gigaset config .....	6, 7
Gigaset.net	
(de)activating the connection .....	22, 30
call divert .....	41
GSM connection	
assign to answering machine .....	39
GSM connections .....	19

## H

Handset	
assigning receive connection .....	35
assigning send connection .....	35
HDSP .....	31
High Definition Sound Performance	
s. HDSP	
HTTP Proxy .....	16

## I

Incoming e-mail server (e-mail) .....	53
Info services .....	54
configuring .....	54
Input fields .....	11
Interface language	
Web configurator .....	8
Internal company network .....	16

Intranet .....	16
IP address	
assigning .....	14
automatically obtaining one .....	14
checking .....	67
IP address type .....	14
IP configuration	
Web configurator .....	14

## L

LAN	
connecting phone .....	14
Language	
Web configurator .....	8
Lists .....	11
Local communication ports .....	51
Local Network .....	14

## M

MAC address	
checking .....	67
Menu	
Web configurator overview .....	5
Menu bar .....	10

## N

NAT	
updating .....	28
Network area .....	27
Network mailbox	
activating/deactivating .....	47
entering number .....	47
saving number .....	47
Number	
entering for network mailbox .....	47
Number assignment .....	36, 39, 40

## O

Online directory	
selecting .....	55
Opening	
Web page .....	13
Options .....	11
Outbound proxy .....	28
mode .....	28
port .....	28
Outbound server .....	28
Own area code	
entering .....	42

<b>P</b>	
Personal provider data.....	25
Phone	
connecting to internal company	
network.....	16
Phone status.....	67
POP3 server.....	53
Power saving adapter plug.....	61
Preferred DNS server	
entering.....	15
Proxy server address.....	26
<b>R</b>	
R key	
function for VoIP.....	49
Radiation	
reducing.....	61
Radio buttons.....	11
Receive connection	
assigning to answering machine.....	39
assigning to base.....	36
assigning to fax machine.....	38
assigning to handset.....	35
Reduced energy consumption.....	61
Registering	
with Web configurator.....	8
Registrar server.....	26
Registrar server port.....	26
Registration name	
e-mail.....	53
VoIP account.....	25
Registration password	
e-mail.....	53
VoIP account.....	25
Registration refresh time.....	26
Registration server.....	26
Remote access to Web configurator.....	15
Remote management.....	15
RFC 2833 (DTMF signalling).....	48
RTP port.....	52
<b>S</b>	
Send connection	
assigning to base.....	36
assigning to fax machine.....	38
assigning to handset.....	35
Server	
for firmware update.....	64
Server port.....	26
Services	
info services.....	54
online directory.....	55
Setting	
online directory.....	55
Settings for VoIP telephony.....	23
SIP Info (DTMF signalling).....	48
SIP port.....	51, 52
Standard gateway	
entering.....	14
Static IP address.....	14
Status	
connection.....	20
of the phone.....	67
Structure of Web page.....	10
STUN refresh time.....	28
STUN server.....	27
STUN server address.....	27
STUN server port.....	28
Subnet mask	
defining.....	14
Summer time	
changing automatically to.....	59
Suppressing	
silence.....	34
speech pauses.....	34
speech pauses (VoIP).....	34
Synchronisation with time server.....	59
System settings	
saving.....	62
<b>T</b>	
Tagged VLAN.....	16
Telephony	
connections.....	18
dialling plans.....	41
network mailbox.....	47
number assignment.....	35
Text information	
in idle display.....	54
Time	
transferring from time server.....	59
Time server.....	59
Transferring PC directory entries	
to directory.....	56
<b>U</b>	
Use random ports.....	51
Use VLAN Tagging.....	16

- User name (VoIP-Account) ..... 25
- Using the buttons ..... 12
- Using the navigation area ..... 11
- Using the working area ..... 11

**V**

- vCard format ..... 58
- vcf file ..... 56
- Version check
  - automatic ..... 66
- Virtual Local Area Network ..... 16
- VLAN ..... 16
- VLAN Identifier ..... 16
- VLAN Priority ..... 16
- Voice quality ..... 31
- Voice quality and infrastructure ..... 34
- VoIP
  - configuring account ..... 23
  - connection name ..... 23
  - loading provider data ..... 24
  - phone number ..... 23
- VoIP connection
  - activating/deactivating ..... 21, 29
  - automatic configuration ..... 23
  - configuring ..... 23
  - name ..... 23
- VoIP provider
  - selecting ..... 24
- VoIP telephony
  - settings ..... 23
- VoIP user data
  - entering ..... 25

- interface language ..... 8
- IP configuration ..... 14
- local network ..... 14
- menu ..... 5
- number assignment ..... 36, 39, 40
- remote access ..... 15
- selecting IP address type ..... 14
- specifying dialling plans ..... 44
- Web interface, see Web configurator
- Web page
  - opening ..... 13
  - structure ..... 10
- Web server, see Web configurator

**W**

- Weather forecasts
  - in idle display mode ..... 54
- Web configurator ..... 1
  - activating VoIP connection ..... 21
  - checking firmware version ..... 67
  - connecting with PC ..... 6
  - deactivating VoIP connection ..... 21
  - defining IP address ..... 14
  - deregistering ..... 9
  - DTMF-signalling for VoIP ..... 48
  - firmware update ..... 64

Issued by

Gigaset Communications GmbH  
Frankenstr. 2a, D-46395 Bocholt

© Gigaset Communications GmbH 2011

All rights reserved. Subject to availability.

Rights of modification reserved.

[www.gigaset.com](http://www.gigaset.com)